

PENVOSE ANGUS



bidr®

FRIDAY, MAY 17, 2024
2.00pm

BRING THIS CATALOGUE TO SALE

ANGUSPURE PARTNER STUD



AngusPure NZ has teamed up with 91 Angus studs who share in our vision - to focus on the end consumer. This stud is proud to be named as one of them, and by using the finest genetics and implementing best management practice they can help you produce more premium quality Angus beef.

Only our AngusPure Partner studs display these devices in their sale catalogues. They indicate bulls endorsed by AngusPure NZ.

A ANGUSPURE ENDORSED BULLS

AngusPure NZ continues to endorse bulls for sale that are either at or above +\$125 for the AngusPure index (API) and at or above \$115 for the AngusPRO index (PRO). These indexes give commercial farmers confidence that by using these selection tools, bulls are most likely to leave progeny with superior carcase quality. At the same time they achieve desirable outcomes for self replacing herds, as the AngusPure & AngusPRO indexes still reward cattle with strong maternal attributes like calving ease, scrotal and growth, along with carcase weight.

To qualify, bulls will be => +\$125 for AngusPure index OR => +\$115 for AngusPRO index

A+ EXTRA ANGUSPURE ENDORSEMENT FOR MARBLING

In addition to the 'A', and to assist bull buyers who wish to select for more marbling AngusPure are rewarding those animals that are either at or above +\$145 for the AngusPure index and at or above \$135 for the AngusPRO index. In addition to this they must have an IMF EBV (for marbling) equal to or greater than +2.2. These bulls will be awarded an 'A+' endorsement. Marbling is one of the very highest eating quality attributes and is necessary in order to meet some of the highest premium requirements for the export program, AngusPure Special Reserve.

To qualify, bulls will be => +\$145 for AngusPure index OR => +\$135 for AngusPRO index, and in addition all bulls must be => +2.2 for IMF EBV

AngusPure NZ recognises the need to lift the amount of marbling in our New Zealand cow genetics, in order to fill the requirements of consumers going forward. Marbling has two critical components; genetics and feeding. Feeding on a rising plane of nutrition is vital but without the genetics these attributes will not be able to express themselves.



THIRTY NINTH ANNUAL BULL SALE

On Account

Penrose Farms Ltd, P.O. Box 15, Wedderburn

40 Rising Two-year-old Bulls

Performance Recorded on TransTasman Angus Cattle Evaluation

On the property White Sow Valley, Wedderburn

Friday, MAY 17th at 2.00 pm

Cattle will be available for inspection from 11.30 a.m. on sale day.

FREE Delivery through South Island

Auctioneers: PGG Wrightson

Participating Company Rural Livestock Ltd.

We welcome non-participating companies introducing buyers prior to the sale commencing and settling on their behalf. Will be paid 6% commission.

Graeme Duncan: Phone: 03 444 9124
 Cell: 021 333555
 Email: glduncan@xtra.co.nz

Stuart Duncan: Phone: 03 444 9194
 Cell: 021 2242320

Although every care has been taken in compiling this catalogue no responsibility is accepted for any errors herein.

FOREWORD

The stud was established in 1965 by Graeme & Alison, and has been continued by Stuart & Lorraine and family today, with the aim of breeding strong functional cattle that can thrive at altitude and harsh conditions. We run a stud herd of around 200 cows, but any cow and calf weaned that do not meet our standard are either culled or relegated to the commercial herd of around 300 cows which are share farmed. The stud cows are run under commercial conditions with a strong performance background with good mothering and milking ability, free moving with sound feet and good temperament. Our breeding objective is to breed strong sound bulls leaving cattle that will kill 300 kg and have a hit rate of 95% for the Angus Pure grade by 20 months of age. We have clients achieving this in our community.

We AI around half of our cows each year so we are continually searching the world for AI sires that suit our breeding program, our follow up bulls must bring all round soundness phenotype and a balanced data set with emphases on what we consider to be the main economic traits.

Because of our high altitude we can experience long harsh winters with late spring growth. We calve later than the average stud and we sell in the first week of the selling season.

Graeme & Allison

Stuart, Lorraine & Family

VETERINARY INSPECTION by



BLACK SHEEP
VETERINARY

All bulls presented for sale have tested negative for Bovine Viral Diarrhoea (BVD) Antigen by ear notch PCR (completed by Zoetis genetics). Vaccinated with Bovilis BVD, two doses prior to sale. Bull testis' have been palpated for consistency, size and scrotal circumference measured and all considered fit for sire bull performance.

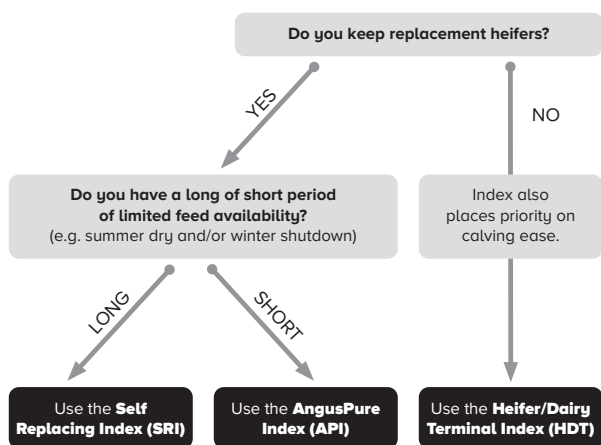
ANGUS NZ EBV's Explained

TransTasman Angus Cattle Evaluation (TACE) EBVs and selection indexes remove the effects of non-genetic factors (e.g. feeding regimes, animal age) from what is seen and measured to provide the best measure of an animal's genetic merit. BREEDPLAN information should always be used in conjunction with other selection criteria, including visual assessment.

A BEST PRACTICE GUIDE TO SELECTING YOUR NEXT NEW ZEALAND ANGUS SIRE

A TACE Guide to Animal Selection allows you to select the best genetics for your herd in four easy steps:

Which New Zealand Angus Selection Index should you use?



1. Identify the **Angus New Zealand selection** index of most relevance to you.
2. **Rank animals** using the chosen selection index.
3. Consider the individual EBVs of importance.
4. Consider other traits of importance (e.g. visual assessment).

The majority of these steps can be undertaken online, allowing you to generate a shortlist of bulls for potential purchase ahead of sale day. The searchable version of this catalogue can be found online here www.angusnz.com.

TRANTASMAN ANGUS CATTLE EVALUATION

A TACE Guide to Interpreting EBVs outlines how to assess and compare the genetic merit of animals. Please note that only EBVs from the same TACE analysis can be directly compared. The New Zealand Angus Association publishes the following TACE EBVs:

Calving Ease Direct (%): Higher (or more positive) CEDir EBVs indicate that two year old heifers will have less difficulty when calving this sire's progeny.

Calving Ease Daughters (%): Higher (or more positive) CEDtr EBVs indicate easier calving of this sire's daughters at two years of age.

Gestation Length (days): Bulls with lower (or more negative) GL EBVs are expected to produce progeny with shorter gestation lengths. Such progeny are also expected to be easier calving.

Birth Weight (kg): Bulls with lower, less positive BWt EBVs are expected to produce progeny that are lighter at birth, with an associated lower risk of calving difficulty. This EBV is particularly important when selecting sires where there is an increased risk of calving difficulty (e.g. heifers, cross-breeding).

200, 400 & 600 Day Weight EBVs (kg): Bulls with larger (or more positive) Weight EBVs are expected to produce progeny that grow faster to 200, 400 & 600 days of age, respectively. The Weight EBV of particular importance will depend on the target market e.g. vealer (200 D), yearling (400 D) or heavy steer (600 D).

Mature Cow Weight (kg): Bulls with larger (or more positive) MCW EBVs are expected to produce daughters with higher mature cow weights and increased feed requirements. More moderate MCW EBVs are generally more favourable in self replacing or maternal production systems.

Milk (kg): Bulls with higher (or more positive) Milk EBVs are expected to produce daughters with more maternal ability leading to higher 200 day weights in their progeny. Selection for moderate Milk EBVs may be preferable in harsher environments as cows with higher Milk EBVs can have impaired fertility and decreased survival under such conditions.

Scrotal Size (cm): Bulls with larger (or more positive) SS EBVs indicate better semen quality and quantity. Daughters are expected to be more fertile and reach puberty at an earlier age.

Days to Calving (days): Bulls with lower (or more negative) DTC EBVs are expected to produce daughters

that are more fertile and have a shorter interval from bull-in date to calving.

Carcase Weight (kg): Bulls with larger (or more positive) CWt EBVs are expected to produce progeny with heavier carcass weights.

Eye Muscle Area (sq. cm): Bulls with a higher (or more positive) EMA EBV are expected to produce progeny with better muscling.

Rib and Rump Fat EBVs (mm): Bulls with higher (or more positive) Rib & Rump Fat EBVs are expected to produce fatter progeny, relative to carcass weight. The desire for more or less fat will depend on the finishing ability of your animals.

Retail Beef Yield (%): Bulls with higher (or more positive) RBV EBVs are expected to produce progeny with higher yielding carcasses.

Intramuscular Fat (%): Bulls with higher (or more positive) IMF EBVs are expected to produce progeny with more marbling and better grading scores (e.g. MSA).

Docility (%): Bulls with higher (or more positive) DOC EBVs are expected to produce more progeny with acceptable temperament.



For more information on **using and understanding TACE EBVs & information**, including the BREEDPLAN Guides, scan the QR code.

<https://breedplan.une.edu.au/media/dtqpdm34/using-and-understanding-breedplan-ebvs.pdf>

SELECTION INDEXES



The New Zealand Angus Association currently reports three different selection indexes. These are the:

- Self Replacing Index
- AngusPure Index
- Heifer/Dairy Terminal Index

Each selection index is reported in units of net profitability per cow mated (\$), and relates to a commercial herd using Angus bulls. Each selection index is focused on efficient beef production, including maternal traits where appropriate. Scan the QR Code for more detail.

<https://breedplan.une.edu.au/media/bqjbnnbh/using-new-zealand-angus-selection-indexes.pdf>

CONDITIONS OF SALE

1. The sale will be conducted under the auspices of the Otago Station Agents Association.
2. Each lot shall become the property of the purchaser at the fall of the hammer.
3. Insurance. It's strongly recommended that all bulls are insured for transport & one year. Insurance agents will be present at the sale.
4. Cattle will be held at owner's risk on property until suitable transport arrangements can be made.
5. Bulls requiring a transfer are subject to the consideration laid down by the Angus Breed Society and with prior arrangement with the vendor.
Minimum price \$15,000.
6. Fertility:- The entry of any bull in this catalogue constitutes a Guarantee of Fertility. A bull proved to be infertile or failing a Serving Capacity Test after his first season with cows will be replaced by the purchaser selecting a replacement bull to its value at our annual sale or by private treaty. The undertaking is limited to the individual value of a bull as a breeder and does not extend to loss of profits or otherwise sustained in the event of infertility or non-capacity being proved.
7. Notice of infertility in all cases of such to be in writing and in the hand of the Vendor not later than twelve calendar months from date of sale.
8. A Veterinary Surgeon's Certificate shall be produced by the purchaser when required.
9. Any disputes will be settled by an arbitrator appointed by the Auctioneers.

Transtasman cattle Evaluation (TACE) Estimated Breeding Values contained in this Sale Catalogue were compiled by the Agricultural Business Research Institute (ABRI) from data supplied by the breeders. Neither The New Zealand Angus Association nor the ABRI oversee or audit the collection of this data.

This sale will be hosted by bidr[®] (bidr.co.nz) as a HYBRID ON-FARM auction, with online bidding and a live-stream available for online purchasers.

All intending online purchasers must register with bidr[®] using an account held with one of the bidr[®] partner agencies in advance of the sale date.

The bidr[®] team is available to assist intending purchasers with signing up and registering – please call 0800 TO BIDR (0800 86 2437), or email enquiries@bidr.co.nz for assistance at any point.

Alternatively, contact your local bidr[®] representative:

Sam Murphy

Lower South Island Territory Manager
027 243 2736

Buy and Sell livestock on bidr[®] in 3 easy steps:

1

Sign up at **www.bidr.co.nz**
and add your agency account
under account details

2

Browse auctions
to find livestock you are
interested in buying

3

Login and register for the
real time online auction to
bid for the livestock you
wish to purchase



Real time auctions, bid on livestock from anywhere.



All livestock listed by livestock agents and assessed by accredited assessors.



Nationwide Reach. Bringing more buyers and sellers together, Virtually.



Buy livestock straight from farm resulting in less stress on animals and positive environmental benefits.



Full livestock assessment information for buyers and nationwide reach for sellers.



**Contact your bidr[®]
Representative to sign up
at bidr.co.nz**

0800 TO BIDR



**fb.com/bidrnz
instagram.com/bidrnz**

APRIL 2024 TRANSTASMAN
Percentile Bands for all

Percentile Band	Calving Ease DIR (%)	Calving Ease DTRS (%)	Gestation Length (days)	Birth Wt. (kg)	200 Day Wt (kg)	400 Day Wt (kg)	600 Day Wt (kg)	Mat Cow Wt (kg)	Milk (kg)	Scrotal Size (cm)
Top Value	+12.4	+11.5	-12.7	-3.4	+76	+132	+177	+217	+36	+6.1
Top 1%	+10.1	+8.6	-9.3	+0.0	+63	+111	+145	+148	+26	+4.5
Top 5%	+8.2	+6.9	-7.5	+1.3	+56	+100	+131	+129	+22	+3.6
Top 10%	+7.1	+5.9	-6.6	+2.0	+53	+95	+124	+120	+21	+3.2
Top 15%	+6.2	+5.1	-6.0	+2.5	+50	+91	+119	+114	+19	+2.9
Top 20%	+5.5	+4.4	-5.6	+2.9	+49	+89	+116	+110	+18	+2.8
Top 25%	+4.8	+3.8	-5.3	+3.2	+47	+86	+112	+106	+17	+2.6
Top 30%	+4.2	+3.3	-5.0	+3.4	+46	+84	+110	+102	+17	+2.5
Top 35%	+3.6	+2.8	-4.7	+3.7	+45	+82	+107	+99	+16	+2.3
Top 40%	+3.1	+2.2	-4.4	+3.9	+43	+81	+105	+96	+16	+2.2
Top 45%	+2.5	+1.7	-4.2	+4.1	+42	+79	+102	+93	+15	+2.1
Top 50%	+2.0	+1.3	-3.9	+4.3	+41	+77	+100	+90	+14	+2.0
Top 55%	+1.4	+0.8	-3.7	+4.5	+40	+76	+98	+88	+14	+1.9
Top 60%	+0.8	+0.2	-3.4	+4.8	+39	+74	+96	+85	+13	+1.8
Top 65%	+0.2	-0.3	-3.2	+5.0	+38	+73	+94	+82	+13	+1.7
Top 70%	-0.5	-0.8	-2.9	+5.2	+37	+71	+91	+79	+12	+1.6
Top 75%	-1.2	-1.5	-2.6	+5.5	+36	+69	+89	+75	+11	+1.4
Top 80%	-2.1	-2.2	-2.2	+5.7	+35	+67	+86	+72	+11	+1.3
Top 85%	-3.1	-3.0	-1.8	+6.0	+33	+65	+82	+67	+10	+1.1
Top 90%	-4.5	-4.1	-1.3	+6.5	+31	+61	+78	+61	+9	+0.8
Top 95%	-6.7	-5.8	-0.5	+7.1	+28	+57	+71	+52	+7	+0.5
Top 99%	-12.5	-10.2	+1.3	+8.5	+22	+47	+58	+34	+4	-0.2
Low Value	-25.1	-24.8	+6.5	+11.8	+11	+29	+33	-4	-5	-1.6



CATTLE EVALUATION

2022 Born Calves

Days to Calving (days)	Carcase Wt (kg)	Eye Muscle Area (sq cm)	Rib Fat (mm)	Rump Fat (mm)	Retail Beef Yield (%)	IMF (%)	Self Replacing Index (\$)	Angus Pure Index (\$)	Docity
-10.2	+103	+17.7	+8.7	+11.2	+2.7	+6.3	+243	+272	+57
-7.7	+84	+10.7	+5.0	+6.4	+1.8	+4.0	+184	+205	+43
-6.6	+73	+8.2	+3.7	+4.7	+1.4	+3.0	+162	+177	+36
-5.9	+68	+6.9	+3.1	+3.8	+1.1	+2.5	+150	+162	+32
-5.6	+64	+6.1	+2.7	+3.2	+1.0	+2.1	+142	+152	+30
-5.3	+61	+5.5	+2.4	+2.8	+0.9	+1.9	+136	+145	+28
-5.1	+58	+5.0	+2.1	+2.4	+0.8	+1.7	+132	+138	+27
-4.9	+56	+4.6	+1.9	+2.1	+0.7	+1.5	+127	+133	+26
-4.7	+54	+4.2	+1.7	+1.8	+0.6	+1.3	+123	+128	+25
-4.5	+52	+3.8	+1.5	+1.6	+0.5	+1.2	+120	+122	+24
-4.3	+50	+3.4	+1.3	+1.4	+0.5	+1.0	+116	+118	+23
-4.2	+48	+3.1	+1.1	+1.1	+0.4	+0.9	+113	+113	+22
-4.0	+46	+2.8	+0.9	+0.9	+0.3	+0.7	+109	+108	+21
-3.8	+44	+2.4	+0.7	+0.7	+0.3	+0.6	+106	+103	+20
-3.7	+42	+2.1	+0.5	+0.4	+0.2	+0.5	+102	+98	+19
-3.5	+41	+1.7	+0.2	+0.1	+0.1	+0.3	+98	+93	+18
-3.2	+38	+1.3	+0.0	-0.2	+0.0	+0.1	+94	+87	+17
-3.0	+36	+0.8	-0.3	-0.6	-0.1	-0.1	+90	+80	+16
-2.7	+34	+0.3	-0.6	-1.0	-0.2	-0.3	+84	+73	+14
-2.4	+30	-0.4	-1.0	-1.6	-0.3	-0.5	+77	+62	+12
-1.9	+24	-1.4	-1.7	-2.5	-0.6	-1.0	+66	+47	+8
-0.9	+11	-3.4	-3.1	-4.2	-1.1	-1.9	+44	+17	+1
+2.8	-11	-9.0	-6.4	-9.0	-2.1	-3.6	-28	-83	-11



SIRES FOR REFERENCE

DEER VALLEY WALL STREET

HerdBook No.: US18827829

Birth Date: 23/01/2017



BASIN PAYWEIGHT 006S

Sire: **BASIN PAYWEIGHT 1682 (IMP USA)**

21AR O LASS 7017

PLATTEMERE WEIGH UP K360

Dam: **DEER VALLEY RITA 36113**

DEER VALLEY RITA 9457

April 2024 TransTasman Angus Cattle Evaluation								
Calving Ease DIR	Calving Ease DTRS	GL	Birth Wt	200Wt	400Wt	600Wt	Mat Wt	Milk
-1.9	+2.5	-4.4	+2.4	+59	+110	+130	+108	+18
81%	65%	97%	97%	96%	96%	96%	92%	89%
Scrotal Size	Days to Calving (days)	Carcase Wt	Eye M Area	Rib Fat	Rump Fat	RBY	IMF	Docity
+1.8	-4.8	+82	+6.3	+1.3	+1.0	-0.6	+2.9	+14
95%	56%	88%	88%	87%	86%	82%	88%	88%

Selection Index Values		
Market Target		Breed Average
Self Replacing Index (\$)		+\$ 113
Angus Pure Index (\$)		+\$ 113
Heifer Dairy Terminal Index (\$)		+\$ 105

Optimizes what Angus cattle are all about. He Sires easy fleshing females with good feet and moderate mature size. He is a true beef sire and one of the most physically sire available. His EBV package is proof moving forward for every economically important trait.

We had 5 of his sons on our 2022 sale with an avg of \$11600. And a sale top price of \$15000. This is furthering his status as a elite material sire.

We used his seamen in our 2019 AI program and again in 2021.



April 2024 Angus BREEDPLAN EBVs								
Calving Ease DIR	Calving Ease DTRS	GL	Birth Wt	200Wt	400Wt	600Wt	Mat Wt	Milk
+1.5	+1.0	-3.9	+4.3	+42	+78	+101	+91	+14

SIRES FOR REFERENCE

RENNYLEA L519 (IMP AUS) (PV)

HerdBook No.: AUNORL519

Birth Date: 20/08/2015



G A R INGENUITY

Sire: **H P C A INTENSITY (IMP USA)**

G A R PREDESTINED 287L

TE MANIA BERKLEY B1(AI) (IMP AUS)

Dam: **RENNYLEA H414(AI)**

RENNYLEA C310(AI)

April 2024 TransTasman Angus Cattle Evaluation								
Calving Ease DIR	Calving Ease DTRS	GL	Birth Wt	200Wt	400Wt	600Wt	Mat Wt	Milk
+1.9 97%	+5.9 90%	-7.2 99%	+4.5 99%	+54 99%	+100 99%	+133 99%	+133 98%	+14 98%
Scrotal Size	Days to Calving (days)	Carcase Wt	Eye M Area	Rib Fat	Rump Fat	RBV	IMF	Docility
+0.9 99%	-5.8 83%	+75 97%	+8.0 95%	+2.1 96%	+2.4 96%	0.0 94%	+4.4 95%	+31 99%

Selection Index Values		
Market Target	Index Value	Breed Average
Self Replacing Index (\$)	+\$ 159	+\$ 113
Angus Pure Index (\$)	+\$ 222	+\$ 113
Heifer Dairy Terminal Index (\$)	+\$ 127	+\$ 105

At the spring sale at Booroomooka Angus stud in 2021 his sons surpassed expectations. Of the 232 bulls sold 56 were Rennyleas sons – sold to average \$19750. Of this, 39 two-year-old sons averaged \$20974. and 17 yearling sons averaged \$16941.

We used him in our 2021 – 2022 AI programs.



Breed Avg. EBVs for 2022 Born Calves								
Scrotal Size	Days to Calving	Carcase Wt	Eye M Area	Rib Fat	Rump Fat0	RBV	IMF	Docility
+2.0	-4.2	+48	+3.2	+1.1	+1.1	+0.4	+0.9	+22

SIRES FOR REFERENCE

EXAR STOCK FUND 9097B

HerdBook No.: US19411210

Birth Date: 25/01/2019



Sire: **DEER VALLEY GROWTH FUND (IMP USA)**
BASIN PAYWEIGHT 1682 (IMP USA)
DEER VALLEY RITA 36113

Dam: **EXAR EMPRESS 0875**
G A R PROPHET K243
EXAR EMPRESS 2622

April 2024 TransTasman Angus Cattle Evaluation								
Calving Ease DIR	Calving Ease DTRS	GL	Birth Wt	200Wt	400Wt	600Wt	Mat Wt	Milk
-2.2	+4.3	-3.3	+2.8	+69	+119	+154	+147	+21
73%	56%	94%	95%	94%	94%	92%	88%	81%
Scrotal Size	Days to Calving (days)	Carcase Wt	Eye M Area	Rib Fat	Rump Fat	RBY	IMF	Docility
+1.1	-3.0	+95	+9.8	-3.0	-3.4	+0.8	+0.4	+40
92%	46%	84%	84%	82%	81%	75%	84%	76%

Selection Index Values		
Market Target	Index Value	Breed Average
Self Replacing Index (\$)	+\$ 99	+\$ 113
Angus Pure Index (\$)	+\$ 141	+\$ 113
Heifer Dairy Terminal Index (\$)	+\$ 114	+\$ 105

Displays the trifecta of breeders demands – Power – Performance – and Phenotype. This was a feature of his six sons which sold for an average of \$34833. In the spring sales of 2020 for Origen Beef (USA).
We use his semen on our 2021 AI Program.



April 2024 Angus BREEDPLAN EBVs								
Calving Ease DIR	Calving Ease DTRS	GL	Birth Wt	200Wt	400Wt	600Wt	Mat Wt	Milk
+1.5	+1.0	-3.9	+4.3	+42	+78	+101	+91	+14

SIRES FOR REFERENCE

TE MANIA 18432 (PV)

HerdBook No.: 16932018432

Birth Date: 10/09/2018



MATAURI REALITY 839

Sire: **TE MANIA 15380**

TE MANIA 13175

TE MANIA PIONEER 13564

Dam: **TE MANIA 15072**

TE MANIA 09007

April 2024 TransTasman Angus Cattle Evaluation								
Calving Ease DIR	Calving Ease DTRS	GL	Birth Wt	200Wt	400Wt	600Wt	Mat Wt	Milk
+7.2 72%	+3.5 61%	-3.8 83%	+2.9 90%	+58 89%	+108 89%	+145 89%	+129 85%	+22 77%
Scrotal Size	Days to Calving (days)	Carcase Wt	Eye M Area	Rib Fat	Rump Fat	RBY	IMF	Docity
+4.1 87%	0.0 50%	+77 78%	+10.1 77%	-2.3 78%	-2.9 78%	+0.3 72%	+4.1 79%	-2 77%

Selection Index Values		
Market Target		Breed Average
Self Replacing Index (\$)		+\$ 64
Angus Pure Index (\$)		+\$ 141
Heifer Dairy Terminal Index (\$)		+\$ 153



Breed Avg. EBVs for 2022 Born Calves								
Scrotal Size	Days to Calving	Carcase Wt	Eye M Area	Rib Fat	Rump Fat0	RBY	IMF	Docity
+2.0	-4.2	+48	+3.2	+1.1	+1.1	+0.4	+0.9	+22

SIRES FOR REFERENCE

TE MANIA 16351 (SV)

HerdBook No.: 16932016351

Birth Date: 31/08/2016



MATAURI REALITY 839

Sire: **MATAURI RESOLUTION F030**

MATAURI 08817

TE MANIA ABSOLUTE 10 506

Dam: **TE MANIA 12 147**

TE MANIA 09 052

April 2024 TransTasman Angus Cattle Evaluation								
Calving Ease DIR	Calving Ease DTRS	GL	Birth Wt	200Wt	400Wt	600Wt	Mat Wt	Milk
+1.4 66%	+4.1 53%	-7.0 71%	+4.7 92%	+57 90%	+92 91%	+132 90%	+118 82%	+17 76%
Scrotal Size	Days to Calving (days)	Carcase Wt	Eye M Area	Rib Fat	Rump Fat	RBY	IMF	Docity
+3.0 88%	-4.3 46%	+68 75%	+5.3 75%	+0.3 76%	+0.1 76%	+0.2 70%	+1.4 75%	+31 61%

Selection Index Values		
Market Target		Breed Average
Self Replacing Index (\$)		+\$ 108
Angus Pure Index (\$)		+\$ 113
Heifer Dairy Terminal Index (\$)		+\$ 105



April 2024 Angus BREEDPLAN EBVs								
Calving Ease DIR	Calving Ease DTRS	GL	Birth Wt	200Wt	400Wt	600Wt	Mat Wt	Milk
+1.5	+1.0	-3.9	+4.3	+42	+78	+101	+91	+14

SIRES FOR REFERENCE

ATAHUA 360-18 (PV)

HerdBook No.: 10322018360

Birth Date: 30/07/2018



MATAURI REALITY 839

Sire: **TE MANIA 15380**

TE MANIA 13175

ATAHUA 38-14

Dam: **ATAHUA QUEST 322-16 (SV)**

ATAHUA QUEST 200-14

April 2024 TransTasman Angus Cattle Evaluation								
Calving Ease DIR	Calving Ease DTRS	GL	Birth Wt	200Wt	400Wt	600Wt	Mat Wt	Milk
+1.7 71%	+0.5 59%	-5.6 84%	+4.6 90%	+50 89%	+94 88%	+126 88%	+133 83%	+18 75%
Scrotal Size	Days to Calving (days)	Carcase Wt	Eye M Area	Rib Fat	Rump Fat	RBY	IMF	Docility
+4.4 86%	-4.2 47%	+58 77%	+6.3 76%	-0.3 77%	-0.5 77%	+0.5 71%	+1.5 78%	+19 74%

Selection Index Values		
Market Target		Breed Average
Self Replacing Index (\$)		+\$ 104
Angus Pure Index (\$)		+\$ 113
Heifer Dairy Terminal Index (\$)		+\$ 118



Breed Avg. EBVs for 2022 Born Calves								
Scrotal Size	Days to Calving	Carcase Wt	Eye M Area	Rib Fat	Rump Fat0	RBY	IMF	Docility
+2.0	-4.2	+48	+3.2	+1.1	+1.1	+0.4	+0.9	+22

SIRES FOR REFERENCE

PENVOSE 18408 (PV)

HerdBook No.: 11833018408

Birth Date: 12/09/2018



Sire: CONNEALY CAPITALIST 028 (IMP USA)
LD CAPITALIST 316 (IMP USA)
LD DIXIE ERICA 2053

Dam: **PENVOSE 176**
ATAHUA 905
PENVOSE 1449

April 2024 TransTasman Angus Cattle Evaluation								
Calving Ease DIR	Calving Ease DTRS	GL	Birth Wt	200Wt	400Wt	600Wt	Mat Wt	Milk
+5.5 68%	+2.8 58%	-3.3 80%	+4.1 87%	+46 85%	+90 85%	+108 84%	+89 78%	+13 68%
Scrotal Size	Days to Calving (days)	Carcase Wt	Eye M Area	Rib Fat	Rump Fat	RBY	IMF	Docility
+1.2 82%	-3.7 51%	+63 73%	+3.9 69%	+2.0 71%	+2.6 71%	-0.1 67%	+1.7 70%	+11 59%
Selection Index Values								
Market Target				Index Value		Breed Average		
Self Replacing Index (\$)				+\$ 139		+\$ 113		
Angus Pure Index (\$)				+\$ 155		+\$ 113		
Heifer Dairy Terminal Index (\$)				+\$ 127		+\$ 105		



INDEX

Lot No.	S.N.
1	22118
2	22132
3	22116
4	22120
5	22135
6	22203
7	22138
8	22230
9	22165
10	22231
11	22123
12	22106
13	22233
14	22224
15	22167
16	22108
17	22238
18	22182
19	22239
20	22152
21	22227
22	22112
23	22192
24	22169
25	22119
26	22163
27	22101
28	22161
29	22157
30	22156
31	22180
32	22164
33	22144
34	22139
35	22211
36	22217
37	22151
38	22190
39	22130
40	22150

Lot 1 **PENVOSE 22118**



HerdBook No.: 11833022118 **Born:** 07/09/2022

Sire: **DEER VALLEY WALL STREET (IMP USA) (ET)**

LD CAPITALIST 316 (IMP USA)

Dam: **PENVOSE 19545 (SV)**

PENVOSE 17252 (SV)



April 2024 TransTasman Angus Cattle Evaluation								
Calving Ease DIR	Calving Ease DTRS	GL	Birth Wt	200Wt	400Wt	600Wt	Mat Wt	Milk
0.0	+3.3	-3.2	+3.4	+54	+98	+121	+101	+16
59%	50%	68%	74%	71%	71%	74%	68%	62%
Scrotal Size	Days to Calving (days)	Carcase Wt	Eye M Area	Rib Fat	Rump Fat	RBY	IMF	Docity
+2.2	-4.7	+74	+5.5	+1.6	+2.1	-0.3	+1.9	+13
74%	41%	62%	61%	62%	61%	56%	64%	62%

Selection Index Values		
Market Target	Index Value	Breed Average
Self Replacing Index (\$)	+\$ 142	+\$ 113
Angus Pure Index (\$)	+\$ 168	+\$ 113
Heifer Dairy Terminal Index (\$)	+\$ 108	+\$ 105

Comments: A smart Deer Valley Wall Street Bull to start the Sale. Thick bull with a great spread of data. Would be suitable for Heifer mating. A real curve Bender.

Purchaser & Price _____

WE'RE HERE TO
HELP YOU TRADE.



Rural Livestock

Looking for stock?

With over 45 agents throughout the South Island, Rural Livestock can help you source the stock you need.



Talk to your local Rural Livestock agent and use our network to invest in the best.

Genetics Specialist: Anthony Cox - **0272 083 071**
Otago Livestock Manager: Hamish Loe - **0274 730 551**

Livestock Agents:

Dennis Mullally - **0274 730 833**
Logan Moore - **0274 730 811**
Tony Pryde - **0274 347 230**
Todd Dundass - **0272 363 117**
Rob Fowler - **0274 730 845**
Jimmy Kenny - **0274 730 865**
Paul Mavor - **0274 730 100**

Rural Livestock helps you get the best outcome for your livestock trade.



Rural Livestock

0800 RURAL (787 255)
www.rurallivestock.co.nz

Lot 2
PENVOSE 22132 (PV)



HerdBook No.: 11833022132
Born: 10/09/2022

Sire: EXAR STOCK FUND 9097B (IMP USA)

ATAHUA 235-06

Dam: PENVOSE 167

PENVOSE 1455



April 2024 TransTasman Angus Cattle Evaluation								
Calving Ease DIR	Calving Ease DTRS	GL	Birth Wt	200Wt	400Wt	600Wt	Mat Wt	Milk
-1.5	+1.5	-3.7	+4.5	+58	+107	+142	+136	+21
54%	42%	64%	75%	71%	72%	74%	67%	59%
Scrotal Size	Days to Calving (days)	Carcase Wt	Eye M Area	Rib Fat	Rump Fat	RBV	IMF	Docility
+2.0	-4.1	+82	+6.6	-0.7	-0.5	+0.2	+1.1	+29
74%	34%	61%	57%	59%	58%	54%	60%	51%

Selection Index Values		
Market Target	Index Value	Breed Average
Self Replacing Index (\$)	+\$ 102	+\$ 113
Angus Pure Index (\$)	+\$ 134	+\$ 113
Heifer Dairy Terminal Index (\$)	+\$ 109	+\$ 105

Comments:
Will grow into a big bull top 10% for growth & 20% EMA.

Purchaser & Price

April 2024 Angus BREEDPLAN EBVs								
Calving Ease DIR	Calving Ease DTRS	GL	Birth Wt	200Wt	400Wt	600Wt	Mat Wt	Milk
+1.5	+1.0	-3.9	+4.3	+42	+78	+101	+91	+14

Lot 3 **PENVOSE 22116 (SV)**



HerdBook No.: 1833022116 **Born:** 06/09/2022

Sire: **DEER VALLEY WALL STREET (IMP USA) (ET)**

ATAHUA 905

Dam: **PENVOSE 18421 (PV)**
 PENVOSE 165



April 2024 TransTasman Angus Cattle Evaluation

Calving Ease DIR	Calving Ease DTRS	GL	Birth Wt	200Wt	400Wt	600Wt	Mat Wt	Milk
-2.5	-1.3	-3.6	+4.7	+56	+109	+133	+117	+13
55%	43%	62%	74%	70%	71%	74%	67%	60%
Scrotal Size	Days to Calving (days)	Carcase Wt	Eye M Area	Rib Fat	Rump Fat	RBV	IMF	Docity
+2.0	-4.0	+78	+3.1	-0.7	-1.1	0.0	+2.0	+15
73%	35%	61%	58%	60%	60%	55%	60%	55%

Selection Index Values

Market Target	Index Value	Breed Average
Self Replacing Index (\$)	+\$ 133	+\$ 113
Angus Pure Index (\$)	+\$ 145	+\$ 113
Heifer Dairy Terminal Index (\$)	+\$ 101	+\$ 105

Comments: This is the complete package, thickness, balance, and a great temperament. 600 Day growth and carcass weight on top 5%.

Purchaser & Price _____

Breed Avg. EBVs for 2022 Born Calves

Scrotal Size	Days to Calving	Carcass Wt	Eye M Area	Rib Fat	Rump Fat0	RBV	IMF	Docity
+2.0	-4.2	+48	+3.2	+1.1	+1.1	+0.4	+0.9	+22

Lot 4 PENVOSE 22120



HerdBook No.: 11833022120

Born: 07/09/2022

Sire: DEER VALLEY WALL STREET (IMP USA) (ET)

ATAHUA 717

Dam: PENVOSE 18511 (SV)

PENVOSE 1803

April 2024 TransTasman Angus Cattle Evaluation

Calving Ease DIR	Calving Ease DTRS	GL	Birth Wt	200Wt	400Wt	600Wt	Mat Wt	Milk
-2.1	+0.6	-4.4	+3.7	+51	+92	+112	+99	+14
56%	44%	64%	74%	71%	72%	74%	68%	61%
Scrotal Size	Days to Calving (days)	Carcase Wt	Eye M Area	Rib Fat	Rump Fat	RBY	IMF	Docity
+2.5	-5.2	+62	+6.0	+2.7	+2.6	0.0	+1.2	+16
73%	36%	62%	59%	60%	60%	55%	61%	57%

Selection Index Values

Market Target	Index Value	Breed Average
Self Replacing Index (\$)	+\$ 148	+\$ 113
Angus Pure Index (\$)	+\$ 154	+\$ 113
Heifer Dairy Terminal Index (\$)	+\$ 96	+\$ 105

Comments: Bull with thickness and great carcase data. Lower birth weight would be suitable for heifers mating.

Purchaser & Price

April 2024 Angus BREEDPLAN EBVs

Calving Ease DIR	Calving Ease DTRS	GL	Birth Wt	200Wt	400Wt	600Wt	Mat Wt	Milk
+1.5	+1.0	-3.9	+4.3	+42	+78	+101	+91	+14

Lot 5 **PENVOSE 22135**



HerdBook No.: 11833022135

Born: 12/09/2022

Sire: **DEER VALLEY WALL STREET (IMP USA) (ET)**
PENVOSE OUTLIER 1800

Dam: **PENVOSE 18412 (PV)**
PENVOSE 1784



April 2024 TransTasman Angus Cattle Evaluation								
Calving Ease DIR	Calving Ease DTRS	GL	Birth Wt	200Wt	400Wt	600Wt	Mat Wt	Milk
-3.3	+0.7	-4.1	+5.0	+63	+113	+146	+131	+13
56%	45%	66%	74%	71%	72%	74%	68%	62%
Scrotal Size	Days to Calving (days)	Carcase Wt	Eye M Area	Rib Fat	Rump Fat	RBV	IMF	Docity
+4.1	-3.8	+85	+6.2	-1.3	-2.0	+0.3	+2.0	+16
74%	37%	62%	59%	61%	61%	56%	62%	59%

Selection Index Values		
Market Target		Breed Average
Self Replacing Index (\$)		+\$ 131
Angus Pure Index (\$)		+\$ 113
Heifer Dairy Terminal Index (\$)		+\$ 105

Comments: Will be a big solid bull, 600 Day growth top 1% and IMF and EMA in top 20% Angus Pure top 10%.

Purchaser & Price _____

Breed Avg. EBVs for 2022 Born Calves								
Scrotal Size	Days to Calving	Carcase Wt	Eye M Area	Rib Fat	Rump Fat0	RBV	IMF	Docity
+2.0	-4.2	+48	+3.2	+1.1	+1.1	+0.4	+0.9	+22

Lot 6
PENVOSE 22203 (PV)



HerdBook No.: 11833022203
Born: 17/10/2022

Sire: PENVOSE 19570 (PV)

PENVOSE OUTLIER 1800

Dam: PENVOSE 19605 (SV)

PENVOSE 1368



April 2024 TransTasman Angus Cattle Evaluation								
Calving Ease DIR	Calving Ease DTRS	GL	Birth Wt	200Wt	400Wt	600Wt	Mat Wt	Milk
+2.4	+3.2	-4.8	+4.8	+49	+92	+121	+122	+12
53%	44%	62%	72%	68%	69%	72%	65%	57%
Scrotal Size	Days to Calving (days)	Carcase Wt	Eye M Area	Rib Fat	Rump Fat	RBV	IMF	Docility
+1.2	-3.1	+65	+0.4	-0.1	+0.3	-0.2	+1.2	+17
72%	36%	58%	55%	57%	57%	51%	58%	54%
Selection Index Values								
Market Target				Index Value		Breed Average		
Self Replacing Index (\$)				+\$ 93		+\$ 113		
Angus Pure Index (\$)				+\$ 108		+\$ 113		
Heifer Dairy Terminal Index (\$)				+\$ 115		+\$ 105		

Comments: Bull with a great carcase still with a lot of growing to do. Mid Oct born.

Purchaser & Price

April 2024 Angus BREEDPLAN EBVs								
Calving Ease DIR	Calving Ease DTRS	GL	Birth Wt	200Wt	400Wt	600Wt	Mat Wt	Milk
+1.5	+1.0	-3.9	+4.3	+42	+78	+101	+91	+14

Lot 7 **PENVOSE 22138 (SV)**



HerdBook No.: 11833022138 **Born:** 12/09/2022

Sire: **RENNYLEA L519 (IMP AUS) (PV)**

PENVOSE 270

Dam: **PENVOSE 20730 (PV)**
 PENVOSE 135



April 2024 TransTasman Angus Cattle Evaluation

Calving Ease DIR	Calving Ease DTRS	GL	Birth Wt	200Wt	400Wt	600Wt	Mat Wt	Milk
-1.4	+3.5	-5.4	+6.4	+67	+116	+161	+164	+13
61%	55%	63%	73%	70%	71%	73%	67%	61%
Scrotal Size	Days to Calving (days)	Carcase Wt	Eye M Area	Rib Fat	Rump Fat	RBV	IMF	Docity
+3.1	-3.4	+91	+1.7	-1.6	-1.7	-0.1	+2.8	+24
%	46%	63%	60%	63%	62%	58%	63%	60%

Selection Index Values

Market Target	Index Value	Breed Average
Self Replacing Index (\$)	+\$ 104	+\$ 113
Angus Pure Index (\$)	+\$ 162	+\$ 113
Heifer Dairy Terminal Index (\$)	+\$ 118	+\$ 105

Comments: First Rennylea L519 on offer. Will be a big bull. 600 day growth and carcase wt in top 1% with IMF and Angus Pure top 10%

Purchaser & Price _____

Breed Avg. EBVs for 2022 Born Calves

Scrotal Size	Days to Calving	Carcase Wt	Eye M Area	Rib Fat	Rump Fat0	RBV	IMF	Docity
+2.0	-4.2	+48	+3.2	+1.1	+1.1	+0.4	+0.9	+22

Lot 8 **PENVOSE 22230 (SV)**



HerdBook No.: 11833022230

Born: 02/10/2022

Sire: **TE MANIA 16351 (SV)**

ATAHUA 905

Dam: **PENVOSE 1821**

PENVOSE 1570



April 2024 TransTasman Angus Cattle Evaluation								
Calving Ease DIR	Calving Ease DTRS	GL	Birth Wt	200Wt	400Wt	600Wt	Mat Wt	Milk
-0.9	-0.9	-5.4	+5.7	+59	+100	+134	+121	+18
47%	38%	52%	71%	67%	68%	65%	61%	54%
Scrotal Size	Days to Calving (days)	Carcase Wt	Eye M Area	Rib Fat	Rump Fat	RBV	IMF	Docity
+2.2	-4.4	+79	+3.6	-0.7	-0.4	+0.7	+0.5	+30
71%	31%	55%	53%	55%	55%	50%	52%	43%

Selection Index Values		
Market Target		Breed Average
Self Replacing Index (\$)		+\$ 113
Angus Pure Index (\$)		+\$ 113
Heifer Dairy Terminal Index (\$)		+\$ 105

Comments: Big solid bull with 600 day growth on top 1% and carcase Wt in top 5%.

Purchaser & Price _____

April 2024 Angus BREEDPLAN EBVs								
Calving Ease DIR	Calving Ease DTRS	GL	Birth Wt	200Wt	400Wt	600Wt	Mat Wt	Milk
+1.5	+1.0	-3.9	+4.3	+42	+78	+101	+91	+14

Lot 9

PENVOSE 22165 (PV)

HerdBook No.: 11833022165

Born: 26/09/2022

Sire: STERN 118 (ET) (SV)

ATAHUA 905

Dam: PENVOSE 176

PENVOSE 1449

April 2024 TransTasman Angus Cattle Evaluation								
Calving Ease DIR	Calving Ease DTRS	GL	Birth Wt	200Wt	400Wt	600Wt	Mat Wt	Milk
+0.6 51%	-5.1 40%	-3.4 51%	+6.4 75%	+49 71%	+90 71%	+123 74%	+110 66%	+14 55%
Scrotal Size	Days to Calving (days)	Carcase Wt	Eye M Area	Rib Fat	Rump Fat	RBV	IMF	Docility
+3.5 74%	-3.3 35%	+61 60%	+4.0 54%	-0.3 57%	-1.5 57%	+0.7 52%	+0.2 53%	+15 38%
Selection Index Values								
Market Target				Index Value		Breed Average		
Self Replacing Index (\$)				+\$ 96		+\$ 113		
Angus Pure Index (\$)				+\$ 101		+\$ 113		
Heifer Dairy Terminal Index (\$)				+\$ 110		+\$ 105		

Comments: More Moderate bull with plenty of style – top 10% for growth and 20% for carcase wt.

Purchaser & Price

Lot 10

PENVOSE 22231 (PV)

HerdBook No.: 11833022231

Born: 02/10/2022

Sire: TE MANIA 16351 (SV)

ATAHUA 235-06

Dam: PENVOSE 1744

PENVOSE 081178

April 2024 TransTasman Angus Cattle Evaluation								
Calving Ease DIR	Calving Ease DTRS	GL	Birth Wt	200Wt	400Wt	600Wt	Mat Wt	Milk
+0.8 48%	+2.1 38%	-6.1 52%	+4.3 74%	+46 69%	+71 70%	+100 73%	+90 66%	+12 55%
Scrotal Size	Days to Calving (days)	Carcase Wt	Eye M Area	Rib Fat	Rump Fat	RBV	IMF	Docility
+1.9 72%	-3.5 31%	+45 58%	+4.5 52%	+2.0 56%	+2.0 55%	+0.2 50%	+0.9 51%	+24 37%
Selection Index Values								
Market Target				Index Value		Breed Average		
Self Replacing Index (\$)				+\$ 97		+\$ 113		
Angus Pure Index (\$)				+\$ 115		+\$ 113		
Heifer Dairy Terminal Index (\$)				+\$ 102		+\$ 105		

Comments: Medium bull with plenty of length. Suitable for heifer mating.

Purchaser & Price

Breed Avg. EBVs for 2022 Born Calves								
Scrotal Size	Days to Calving	Carcase Wt	Eye M Area	Rib Fat	Rump Fat0	RBV	IMF	Docility
+2.0	-4.2	+48	+3.2	+1.1	+1.1	+0.4	+0.9	+22

Lot 11 PENVOSE 22123 (PV)

HerdBook No.: 11833022123 Born: 08/09/2022

Sire: EXAR STOCK FUND 9097B (IMP USA)

PENVOSE 1421

Dam: PENVOSE 135

PENVOSE 1549

April 2024 TransTasman Angus Cattle Evaluation								
Calving Ease DIR	Calving Ease DTRS	GL	Birth Wt	200Wt	400Wt	600Wt	Mat Wt	Milk
-4.8 53%	+2.0 41%	-2.6 62%	+4.8 74%	+56 71%	+100 71%	+132 74%	+134 67%	+13 59%
Scrotal Size	Days to Calving (days)	Carcase Wt	Eye M Area	Rib Fat	Rump Fat	RBV	IMF	Docility
+1.4 73%	-2.3 33%	+74 61%	+5.2 57%	-2.1 59%	-2.0 58%	+0.9 53%	0.0 59%	+29 52%
Selection Index Values								
Market Target				Index Value		Breed Average		
Self Replacing Index (\$)				+\$ 84		+\$ 113		
Angus Pure Index (\$)				+\$ 92		+\$ 113		
Heifer Dairy Terminal Index (\$)				+\$ 91		+\$ 105		

Comments: Will grow into a big fellow. Top 5% for 600 Day growth and carcase wt.

Purchaser & Price _____

Lot 12 PENVOSE 22106 (SV)

HerdBook No.: 11833022106 Born: 05/09/2022

Sire: EXAR STOCK FUND 9097B (IMP USA)

MATAURI OUTLIER F031

Dam: PENVOSE 1803

PENVOSE 1558

April 2024 TransTasman Angus Cattle Evaluation								
Calving Ease DIR	Calving Ease DTRS	GL	Birth Wt	200Wt	400Wt	600Wt	Mat Wt	Milk
-0.9 56%	+3.3 45%	-3.9 66%	+4.2 75%	+62 71%	+113 72%	+148 74%	+144 68%	+20 61%
Scrotal Size	Days to Calving (days)	Carcase Wt	Eye M Area	Rib Fat	Rump Fat	RBV	IMF	Docility
+1.5 74%	-1.7 37%	+85 62%	+6.8 60%	-1.8 61%	-2.5 61%	+0.9 55%	+0.1 63%	+26 56%
Selection Index Values								
Market Target				Index Value		Breed Average		
Self Replacing Index (\$)				+\$ 80		+\$ 113		
Angus Pure Index (\$)				+\$ 112		+\$ 113		
Heifer Dairy Terminal Index (\$)				+\$ 116		+\$ 105		

Comments: A lot of growing to do, top 1% for 600 Day growth and carcase wt and good eye mussle.

Purchaser & Price _____

April 2024 Angus BREEDPLAN EBVs								
Calving Ease DIR	Calving Ease DTRS	GL	Birth Wt	200Wt	400Wt	600Wt	Mat Wt	Milk
+1.5	+1.0	-3.9	+4.3	+42	+78	+101	+91	+14

Lot 13 **PENVOSE 22233 (SV)**

HerdBook No.: 11833022233

Born: 03/10/2022

Sire: **TE MANIA 16351 (SV)**

PENVOSE 1421

Dam: **PENVOSE 1882**

PENVOSE 1363

April 2024 TransTasman Angus Cattle Evaluation								
Calving Ease DIR	Calving Ease DTRS	GL	Birth Wt	200Wt	400Wt	600Wt	Mat Wt	Milk
-0.2 48%	+2.3 38%	-5.1 52%	+5.2 73%	+53 69%	+95 70%	+126 72%	+124 66%	+11 55%
Scrotal Size	Days to Calving (days)	Carcase Wt	Eye M Area	Rib Fat	Rump Fat	RBV	IMF	Docility
+1.2 71%	-3.1 32%	+69 58%	+0.4 53%	-1.0 56%	-0.9 56%	+0.7 51%	-0.1 52%	+25 41%
Selection Index Values								
Market Target				Index Value		Breed Average		
Self Replacing Index (\$)				+\$ 104		+\$ 113		
Angus Pure Index (\$)				+\$ 111		+\$ 113		
Heifer Dairy Terminal Index (\$)				+\$ 108		+\$ 105		

Comments: Another Te Mania 351 bull. will suit any breeding programme. Top 10% for 600 Day growth.

Purchaser & Price _____

Lot 14 **PENVOSE 22224 (SV)**

HerdBook No.: 11833022224

Born: 01/10/2022

Sire: **TE MANIA 16351 (SV)**

PENVOSE 1421

Dam: **PENVOSE 1862**

PENVOSE 1350

April 2024 TransTasman Angus Cattle Evaluation								
Calving Ease DIR	Calving Ease DTRS	GL	Birth Wt	200Wt	400Wt	600Wt	Mat Wt	Milk
-0.3 48%	+2.2 38%	-5.7 52%	+5.2 73%	+50 69%	+81 70%	+115 73%	+114 66%	+11 55%
Scrotal Size	Days to Calving (days)	Carcase Wt	Eye M Area	Rib Fat	Rump Fat	RBV	IMF	Docility
+2.2 72%	-4.4 32%	+59 58%	+1.6 53%	+1.7 56%	+2.0 55%	0.0 50%	+0.5 52%	+25 41%
Selection Index Values								
Market Target				Index Value		Breed Average		
Self Replacing Index (\$)				+\$ 105		+\$ 113		
Angus Pure Index (\$)				+\$ 122		+\$ 113		
Heifer Dairy Terminal Index (\$)				+\$ 101		+\$ 105		

Comments: A very sound medium sized bull. Good mover and would be ideal with cows on the hill blocks. Top 20% for 600 Day growth.

Purchaser & Price _____

Breed Avg. EBVs for 2022 Born Calves

Scrotal Size	Days to Calving	Carcase Wt	Eye M Area	Rib Fat	Rump Fat0	RBV	IMF	Docility
+2.0	-4.2	+48	+3.2	+1.1	+1.1	+0.4	+0.9	+22

Lot 15 **PENVOSE 22167**

HerdBook No.: 11833022167

Born: 27/09/2022

Sire: **ATAHUA 360-18 (PV)**

ATAHUA 235-06

Dam: **PENVOSE 1876**

PENVOSE 071110

April 2024 TransTasman Angus Cattle Evaluation								
Calving Ease DIR	Calving Ease DTRS	GL	Birth Wt	200Wt	400Wt	600Wt	Mat Wt	Milk
-0.4 53%	-2.3 44%	-4.6 61%	+5.5 73%	+47 69%	+90 68%	+122 70%	+127 65%	+17 58%
Scrotal Size	Days to Calving (days)	Carcase Wt	Eye M Area	Rib Fat	Rump Fat	RBV	IMF	Docity
+3.3 67%	-3.9 34%	+56 58%	+3.3 55%	+0.4 57%	+0.6 57%	+0.3 51%	+0.9 58%	+18 50%
Selection Index Values								
Market Target				Index Value		Breed Average		
Self Replacing Index (\$)				+\$ 92		+\$ 113		
Angus Pure Index (\$)				+\$ 99		+\$ 113		
Heifer Dairy Terminal Index (\$)				+\$ 105		+\$ 105		

Comments: Will grow into a very useful medium sized run bull.
Top 10% for 600 Day growth.

Purchaser & Price _____

Lot 16 **PENVOSE 22108 (PV)**

HerdBook No.: 11833022108

Born: 05/09/2022

Sire: **EXAR STOCK FUND 9097B (IMP USA)**

ATAHUA 905

Dam: **PENVOSE 162**

PENVOSE 1577

April 2024 TransTasman Angus Cattle Evaluation								
Calving Ease DIR	Calving Ease DTRS	GL	Birth Wt	200Wt	400Wt	600Wt	Mat Wt	Milk
-2.5 53%	-0.8 40%	-3.6 63%	+4.9 75%	+58 71%	+104 71%	+136 74%	+128 67%	+15 59%
Scrotal Size	Days to Calving (days)	Carcase Wt	Eye M Area	Rib Fat	Rump Fat	RBV	IMF	Docity
+0.8 74%	-2.2 32%	+77 61%	+7.5 56%	-3.6 58%	-4.3 58%	+1.4 53%	+0.1 59%	+28 51%
Selection Index Values								
Market Target				Index Value		Breed Average		
Self Replacing Index (\$)				+\$ 91		+\$ 113		
Angus Pure Index (\$)				+\$ 106		+\$ 113		
Heifer Dairy Terminal Index (\$)				+\$ 105		+\$ 105		

Comments: A strong stock fund son, top 5% for 600 Day growth and carcase wt. With good EMA in top 10%.

Purchaser & Price _____

April 2024 Angus BREEDPLAN EBVs								
Calving Ease DIR	Calving Ease DTRS	GL	Birth Wt	200Wt	400Wt	600Wt	Mat Wt	Milk
+1.5	+1.0	-3.9	+4.3	+42	+78	+101	+91	+14

Lot 17 **PENVOSE 22238**

HerdBook No.: 11833022238

Born: 03/10/2022

Sire: **TE MANIA 16351 (SV)**

ATAHUA 235-06

Dam: **PENVOSE 1743**

PENVOSE 1035

April 2024 TransTasman Angus Cattle Evaluation								
Calving Ease DIR	Calving Ease DTRS	GL	Birth Wt	200Wt	400Wt	600Wt	Mat Wt	Milk
+0.9 48%	+2.0 38%	-5.9 53%	+5.1 73%	+46 67%	+78 68%	+109 70%	+104 65%	+14 55%
Scrotal Size	Days to Calving (days)	Carcase Wt	Eye M Area	Rib Fat	Rump Fat	RBV	IMF	Docity
+1.8 9%	-3.1 31%	+51 56%	+4.3 50%	-0.7 53%	-1.2 53%	+0.7 48%	+1.0 50%	+22 38%
Selection Index Values								
Market Target				Index Value		Breed Average		
Self Replacing Index (\$)				+\$ 84		+\$ 113		
Angus Pure Index (\$)				+\$ 99		+\$ 113		
Heifer Dairy Terminal Index (\$)				+\$ 106		+\$ 105		

Comments: Te Mania 351 has breed well here, this is a second smaller type bull that will fit into many heards.

Purchaser & Price _____

Lot 18 **PENVOSE 22182 (PV)**

HerdBook No.: 11833022182

Born: 24/10/2022

Sire: **TE MANIA 18432 (PV)**

PENVOSE OUTLIER 1800

Dam: **PENVOSE 18419 (SV)**

PENVOSE 1839

April 2024 TransTasman Angus Cattle Evaluation								
Calving Ease DIR	Calving Ease DTRS	GL	Birth Wt	200Wt	400Wt	600Wt	Mat Wt	Milk
+2.4 54%	+1.2 44%	-4.0 62%	+5.2 71%	+59 68%	+103 67%	+143 71%	+134 64%	+18 58%
Scrotal Size	Days to Calving (days)	Carcase Wt	Eye M Area	Rib Fat	Rump Fat	RBV	IMF	Docity
+3.3 63%	-1.3 35%	+77 58%	+6.8 57%	-1.4 59%	-2.3 59%	+0.2 53%	+3.0 60%	+7 55%
Selection Index Values								
Market Target				Index Value		Breed Average		
Self Replacing Index (\$)				+\$ 69		+\$ 113		
Angus Pure Index (\$)				+\$ 128		+\$ 113		
Heifer Dairy Terminal Index (\$)				+\$ 129		+\$ 105		

Comments: A very good son of Te Mania 432, Top 5% for 600 Day growth, carcase wt and IMF.

Purchaser & Price _____

Breed Avg. EBVs for 2022 Born Calves

Scrotal Size	Days to Calving	Carcase Wt	Eye M Area	Rib Fat	Rump Fat0	RBV	IMF	Docity
+2.0	-4.2	+48	+3.2	+1.1	+1.1	+0.4	+0.9	+22

Lot 19 PENVOSE 22239 (SV)

HerdBook No.: 11833022239

Born: 05/10/2022

Sire: TE MANIA 16351 (SV)

ARDROSSAN EQUATOR A241 (IMP AUS)

Dam: PENVOSE 1560

EMU PLAINS XANTHIPPE 499



April 2024 TransTasman Angus Cattle Evaluation								
Calving Ease DIR	Calving Ease DTRS	GL	Birth Wt	200Wt	400Wt	600Wt	Mat Wt	Milk
-2.2 51%	+1.5 43%	-4.8 55%	+5.7 73%	+55 69%	+94 70%	+130 73%	+122 66%	+13 57%
Scrotal Size	Days to Calving (days)	Carcase Wt	Eye M Area	Rib Fat	Rump Fat	RBV	IMF	Docity
+3.6 72%	-5.4 36%	+73 58%	+7.1 54%	-0.4 56%	-0.4 56%	+0.8 52%	+0.9 56%	+26 47%
Selection Index Values								
Market Target				Index Value		Breed Average		
Self Replacing Index (\$)				+\$ 137		+\$ 113		
Angus Pure Index (\$)				+\$ 161		+\$ 113		
Heifer Dairy Terminal Index (\$)				+\$ 104		+\$ 105		

Comments: Another standout son of Te Mania 351, top 5% for 600 day growth, carcase wt and EMA.

Purchaser & Price

Lot 20 PENVOSE 22152 (PV)

HerdBook No.: 11833022152

Born: 20/09/2022

Sire: STERN 118 (ET) (SV)

ATAHUA 905

Dam: PENVOSE 124

PENVOSE 1570

April 2024 TransTasman Angus Cattle Evaluation								
Calving Ease DIR	Calving Ease DTRS	GL	Birth Wt	200Wt	400Wt	600Wt	Mat Wt	Milk
+1.5 50%	-3.7 41%	-5.0 51%	+5.4 74%	+51 70%	+86 71%	+110 73%	+100 66%	+14 55%
Scrotal Size	Days to Calving (days)	Carcase Wt	Eye M Area	Rib Fat	Rump Fat	RBV	IMF	Docity
+3.0 73%	-3.7 36%	+60 59%	+2.2 55%	-1.0 57%	-1.8 57%	+0.7 53%	-0.1 54%	+18 43%
Selection Index Values								
Market Target				Index Value		Breed Average		
Self Replacing Index (\$)				+\$ 105		+\$ 113		
Angus Pure Index (\$)				+\$ 99		+\$ 113		
Heifer Dairy Terminal Index (\$)				+\$ 109		+\$ 105		

Comments: The Type of bull that would make a great terminal crossing sire.

Purchaser & Price

April 2024 Angus BREEDPLAN EBVs								
Calving Ease DIR	Calving Ease DTRS	GL	Birth Wt	200Wt	400Wt	600Wt	Mat Wt	Milk
+1.5	+1.0	-3.9	+4.3	+42	+78	+101	+91	+14



Wedderburn Cottages

Wedderburn Cottage offers
FREE accommodation
to buyers and agents
the night before and after the sale.
Enquires welcome.

**Come and experience the
Wedderburn Cottages**

Address:

Rapid #7145, State Highway 85, Wedderburn

Postal address:

PO Box 15, Wedderburn 9355

Phone:

+64 3 444 9194

Mobile:

027 268 9194

Email: s.l.duncan@xtra.co.nz

W: www.wedderburncottages.co.nz

Contact: Lorraine Duncan



Breed Avg. EBVs for 2022 Born Calves

Scrotal Size	Days to Calving	Carcass Wt	Eye M Area	Rib Fat	Rump Fat0	RBV	IMF	Dolcity
+2.0	-4.2	+48	+3.2	+1.1	+1.1	+0.4	+0.9	+22

Lot 21 PENVOSE 22227 (SV)

HerdBook No.: 11833022227

Born: 02/10/2022

Sire: TE MANIA 16351 (SV)

ATAHUA 717

Dam: PENVOSE 1838

PENVOSE 1271



April 2024 TransTasman Angus Cattle Evaluation								
Calving Ease DIR	Calving Ease DTRS	GL	Birth Wt	200Wt	400Wt	600Wt	Mat Wt	Milk
-0.5 48%	+0.6 37%	-4.9 52%	+4.4 73%	+45 69%	+69 69%	+89 72%	+76 66%	+12 54%
Scrotal Size	Days to Calving (days)	Carcase Wt	Eye M Area	Rib Fat	Rump Fat	RBV	IMF	Docity
+2.4 71%	-5.0 31%	+42 57%	+5.4 52%	+1.0 55%	+0.8 54%	+0.5 50%	+1.4 51%	+26 40%
Selection Index Values								
Market Target				Index Value		Breed Average		
Self Replacing Index (\$)				+\$ 128		+\$ 113		
Angus Pure Index (\$)				+\$ 130		+\$ 113		
Heifer Dairy Terminal Index (\$)				+\$ 94		+\$ 105		

Comments: A 351 son with lots of presents, a good spread of data, would fit into any herd.

Purchaser & Price _____

Lot 22 PENVOSE 22112

HerdBook No.: 11833022112

Born: 05/09/2022

Sire: EXAR STOCK FUND 9097B (IMP USA)

ATAHUA 905

Dam: PENVOSE 147

PENVOSE 1558

April 2024 TransTasman Angus Cattle Evaluation								
Calving Ease DIR	Calving Ease DTRS	GL	Birth Wt	200Wt	400Wt	600Wt	Mat Wt	Milk
-2.4 52%	-0.2 40%	-3.0 62%	+4.7 75%	+55 71%	+93 71%	+130 74%	+126 67%	+15 58%
Scrotal Size	Days to Calving (days)	Carcase Wt	Eye M Area	Rib Fat	Rump Fat	RBV	IMF	Docity
0.0 73%	-2.0 32%	+71 61%	+8.3 55%	-2.4 58%	-3.1 57%	+1.6 52%	-0.2 58%	+28 50%
Selection Index Values								
Market Target				Index Value		Breed Average		
Self Replacing Index (\$)				+\$ 76		+\$ 113		
Angus Pure Index (\$)				+\$ 96		+\$ 113		
Heifer Dairy Terminal Index (\$)				+\$ 104		+\$ 105		

Comments: Will be a big bull. A son of Exar Stockfund. Top 5% for 600 day and EMA. A sound all round Bull.

Purchaser & Price _____

April 2024 Angus BREEDPLAN EBVs								
Calving Ease DIR	Calving Ease DTRS	GL	Birth Wt	200Wt	400Wt	600Wt	Mat Wt	Milk
+1.5	+1.0	-3.9	+4.3	+42	+78	+101	+91	+14

Lot 23 **PENVOSE 22192 (SV)**

HerdBook No.: 11833022192

Born: 30/09/2022

Sire: **RENNYLEA L519 (IMP AUS) (PV)**

PENVOSE 1421

Dam: **PENVOSE 1848**

PENVOSE 1356



April 2024 TransTasman Angus Cattle Evaluation								
Calving Ease DIR	Calving Ease DTRS	GL	Birth Wt	200Wt	400Wt	600Wt	Mat Wt	Milk
-0.2 63%	+3.3 57%	-5.3 65%	+4.6 74%	+47 71%	+85 72%	+112 74%	+115 69%	+10 65%
Scrotal Size	Days to Calving (days)	Carcase Wt	Eye M Area	Rib Fat	Rump Fat	RBV	IMF	Docity
+0.7 74%	-4.7 49%	+61 64%	+5.5 62%	+1.0 64%	+1.5 64%	+0.6 60%	+2.1 65%	+25 62%
Selection Index Values								
Market Target				Index Value		Breed Average		
Self Replacing Index (\$)				+\$ 135		+\$ 113		
Angus Pure Index (\$)				+\$ 157		+\$ 113		
Heifer Dairy Terminal Index (\$)				+\$ 107		+\$ 105		

Comments: Another Rennylea L519 son. We are really impressed with these cattle. A great even spread of data, Top 20% for AP Index.

Purchaser & Price _____

Lot 24 **PENVOSE 22169 (SV)**

HerdBook No.: 11833022169

Born: 28/09/2022

Sire: **ATAHUA 360-18 (PV)**

PENVOSE OUTLIER 1800

Dam: **PENVOSE 19581 (SV)**

PENVOSE 1560



April 2024 TransTasman Angus Cattle Evaluation								
Calving Ease DIR	Calving Ease DTRS	GL	Birth Wt	200Wt	400Wt	600Wt	Mat Wt	Milk
-1.9 54%	-0.1 45%	-4.7 63%	+5.9 73%	+50 69%	+96 71%	+130 73%	+134 66%	+14 57%
Scrotal Size	Days to Calving (days)	Carcase Wt	Eye M Area	Rib Fat	Rump Fat	RBV	IMF	Docity
+3.0 73%	-4.6 36%	+69 59%	+5.2 56%	+0.5 59%	+0.7 59%	+0.3 53%	+1.4 60%	+18 55%
Selection Index Values								
Market Target				Index Value		Breed Average		
Self Replacing Index (\$)				+\$ 115		+\$ 113		
Angus Pure Index (\$)				+\$ 132		+\$ 113		
Heifer Dairy Terminal Index (\$)				+\$ 103		+\$ 105		

Comments: A very even bull 600 day weight in top 5% through yo excellent carcass data.

Purchaser & Price _____

Breed Avg. EBVs for 2022 Born Calves

Scrotal Size	Days to Calving	Carcase Wt	Eye M Area	Rib Fat	Rump Fat0	RBV	IMF	Docity
+2.0	-4.2	+48	+3.2	+1.1	+1.1	+0.4	+0.9	+22

Lot 25

PENVOSE 22119 (SV)

HerdBook No.: 11833022119

Born: 07/09/2022

Sire: DEER VALLEY WALL STREET (IMP USA) (ET)

Stern 118 (ET) (SV)

Dam: PENVOSE 19546 (SV)

PENVOSE 1663

A

April 2024 TransTasman Angus Cattle Evaluation								
Calving Ease DIR	Calving Ease DTRS	GL	Birth Wt	200Wt	400Wt	600Wt	Mat Wt	Milk
-0.6 55%	+0.3 44%	-4.0 63%	+4.6 74%	+57 71%	+104 72%	+134 74%	+118 68%	+16 60%
Scrotal Size	Days to Calving (days)	Carcase Wt	Eye M Area	Rib Fat	Rump Fat	RBV	IMF	Docity
+3.0 3%	-4.0 35%	+76 61%	+4.8 58%	+1.3 60%	+0.9 59%	-0.2 55%	+1.3 60%	+15 56%
Selection Index Values								
Market Target				Index Value		Breed Average		
Self Replacing Index (\$)				+\$ 122		+\$ 113		
Angus Pure Index (\$)				+\$ 147		+\$ 113		
Heifer Dairy Terminal Index (\$)				+\$ 109		+\$ 105		

Comments: Deer Valley Wall Street bulls just keep standing out. 4.6BWT through to 134kg 600 Day with a very even spread of carcase EBVs. Top 20% for Angus Pure index

Purchaser & Price _____

Lot 26

PENVOSE 22163 (SV)

HerdBook No.: 11833022163

Born: 26/09/2022

Sire: TE MANIA 18432 (PV)

MATAURI RESOLUTION F030

Dam: PENVOSE 17252 (SV)

PENVOSE 1664

April 2024 TransTasman Angus Cattle Evaluation								
Calving Ease DIR	Calving Ease DTRS	GL	Birth Wt	200Wt	400Wt	600Wt	Mat Wt	Milk
+2.3 56%	+1.5 47%	-2.9 67%	+3.8 73%	+47 70%	+87 71%	+116 73%	+105 67%	+19 59%
Scrotal Size	Days to Calving (days)	Carcase Wt	Eye M Area	Rib Fat	Rump Fat	RBV	IMF	Docity
+2.7 73%	-3.2 37%	+63 60%	+3.9 57%	+1.2 60%	+2.3 59%	-0.2 54%	+2.0 61%	+7 57%
Selection Index Values								
Market Target				Index Value		Breed Average		
Self Replacing Index (\$)				+\$ 95		+\$ 113		
Angus Pure Index (\$)				+\$ 122		+\$ 113		
Heifer Dairy Terminal Index (\$)				+\$ 115		+\$ 105		

Comments: Suitable for heifer mating – nice even spread of data from BWT through to carcase EBVs.

Purchaser & Price _____

April 2024 Angus BREEDPLAN EBVs								
Calving Ease DIR	Calving Ease DTRS	GL	Birth Wt	200Wt	400Wt	600Wt	Mat Wt	Milk
+1.5	+1.0	-3.9	+4.3	+42	+78	+101	+91	+14

Lot 27 **PENVOSE 22101 (SV)**

HerdBook No.: 11833022101

Born: 04/09/2022

Sire: **PENVOSE 18408 (PV)**

STERN 118 (ET) (SV)

Dam: **PENVOSE 19578 (SV)**

PENVOSE 1558

April 2024 TransTasman Angus Cattle Evaluation								
Calving Ease DIR	Calving Ease DTRS	GL	Birth Wt	200Wt	400Wt	600Wt	Mat Wt	Milk
+4.6 48%	+2.0 39%	-4.0 51%	+4.3 71%	+44 64%	+80 66%	+106 68%	+95 62%	+13 48%
Scrotal Size	Days to Calving (days)	Carcase Wt	Eye M Area	Rib Fat	Rump Fat	RBV	IMF	Docility
+1.3 67%	-3.3 33%	+57 55%	0.0 49%	+3.1 52%	+3.7 52%	-0.4 47%	+0.7 48%	+14 41%
Selection Index Values								
Market Target				Index Value		Breed Average		
Self Replacing Index (\$)				+\$ 102		+\$ 113		
Angus Pure Index (\$)				+\$ 114		+\$ 113		
Heifer Dairy Terminal Index (\$)				+\$ 118		+\$ 105		

Comments: A well balanced Bull with good data, suitable for mating heifers.

Purchaser & Price _____

Lot 28 **PENVOSE 22161 (SV)**

HerdBook No.: 11833022161

Born: 26/09/2022

Sire: **TE MANIA 18432 (PV)**

ATAHUA 905

Dam: **PENVOSE 18448 (PV)**

PENVOSE 1688

April 2024 TransTasman Angus Cattle Evaluation								
Calving Ease DIR	Calving Ease DTRS	GL	Birth Wt	200Wt	400Wt	600Wt	Mat Wt	Milk
+3.0 52%	-1.2 42%	-3.5 59%	+5.1 73%	+52 70%	+103 71%	+132 73%	+126 66%	+18 57%
Scrotal Size	Days to Calving (days)	Carcase Wt	Eye M Area	Rib Fat	Rump Fat	RBV	IMF	Docility
+2.6 73%	-1.7 33%	+69 60%	+3.8 55%	-2.6 58%	-3.1 58%	+0.7 53%	+1.8 58%	+6 50%
Selection Index Values								
Market Target				Index Value		Breed Average		
Self Replacing Index (\$)				+\$ 82		+\$ 113		
Angus Pure Index (\$)				+\$ 104		+\$ 113		
Heifer Dairy Terminal Index (\$)				+\$ 127		+\$ 105		

Comments: Well muscled bull 600 Day weight in top 5% and carcase wt in top 10%.

Purchaser & Price _____

Breed Avg. EBVs for 2022 Born Calves

Scrotal Size	Days to Calving	Carcase Wt	Eye M Area	Rib Fat	Rump Fat0	RBV	IMF	Docility
+2.0	-4.2	+48	+3.2	+1.1	+1.1	+0.4	+0.9	+22

Lot 29 **PENVOSE 22157 (PV)**

HerdBook No.: 11833022157

Born: 23/09/2022

Sire: **PENVOSE 18408 (PV)**



PENVOSE OUTLIER 1800

Dam: **PENVOSE 19644 (SV)**

PENVOSE 1443

April 2024 TransTasman Angus Cattle Evaluation								
Calving Ease DIR	Calving Ease DTRS	GL	Birth Wt	200Wt	400Wt	600Wt	Mat Wt	Milk
+1.6 50%	+2.2 42%	-3.6 56%	+5.4 72%	+48 68%	+92 69%	+120 72%	+113 64%	+10 51%
Scrotal Size	Days to Calving (days)	Carcase Wt	Eye M Area	Rib Fat	Rump Fat	RBV	IMF	Docity
+1.9 72%	-3.3 35%	+68 58%	+3.7 53%	-0.6 56%	-0.7 56%	+0.4 51%	+1.6 53%	+14 47%
Selection Index Values								
Market Target				Index Value		Breed Average		
Self Replacing Index (\$)				+\$ 115		+\$ 113		
Angus Pure Index (\$)				+\$ 132		+\$ 113		
Heifer Dairy Terminal Index (\$)				+\$ 114		+\$ 105		

Comments: Nice balance of growth EBVs through to carcase with EBVs in top 10%. A solid bull.

Purchaser & Price _____

Lot 30 **PENVOSE 22156 (SV)**

HerdBook No.: 11833022156

Born: 22/09/2022

Sire: **ATAHUA 360-18 (PV)**

TE MANIA 16351 (SV)

Dam: **PENVOSE 19566 (SV)**

PENVOSE 17336 (SV)

April 2024 TransTasman Angus Cattle Evaluation								
Calving Ease DIR	Calving Ease DTRS	GL	Birth Wt	200Wt	400Wt	600Wt	Mat Wt	Milk
0.0 51%	+1.6 41%	-5.1 59%	+4.9 73%	+47 69%	+86 70%	+116 72%	+118 65%	+15 54%
Scrotal Size	Days to Calving (days)	Carcase Wt	Eye M Area	Rib Fat	Rump Fat	RBV	IMF	Docity
+2.9 72%	-3.5 32%	+56 58%	+4.7 54%	-1.0 57%	-1.3 57%	+0.9 52%	+0.8 57%	+22 51%
Selection Index Values								
Market Target				Index Value		Breed Average		
Self Replacing Index (\$)				+\$ 96		+\$ 113		
Angus Pure Index (\$)				+\$ 105		+\$ 113		
Heifer Dairy Terminal Index (\$)				+\$ 107		+\$ 105		

Comments: Atahua 360 has left very sound cattle and this fellow is no exception – good growth data.

Purchaser & Price _____

April 2024 Angus BREEDPLAN EBVs								
Calving Ease DIR	Calving Ease DTRS	GL	Birth Wt	200Wt	400Wt	600Wt	Mat Wt	Milk
+1.5	+1.0	-3.9	+4.3	+42	+78	+101	+91	+14

Lot 31 **PENVOSE 22180 (PV)**

HerdBook No.: 11833022180

Born: 04/10/2022

Sire: **TE MANIA 18432 (PV)**

PENVOSE OUTLIER 1800

Dam: **PENVOSE 20721 (SV)**

PENVOSE 1573



April 2024 TransTasman Angus Cattle Evaluation								
Calving Ease DIR	Calving Ease DTRS	GL	Birth Wt	200Wt	400Wt	600Wt	Mat Wt	Milk
+2.9 54%	+1.5 45%	-3.8 63%	+4.2 73%	+51 69%	+96 70%	+124 73%	+111 66%	+16 58%
Scrotal Size	Days to Calving (days)	Carcase Wt	Eye M Area	Rib Fat	Rump Fat	RBV	IMF	Docity
+3.9 73%	-2.1 36%	+63 59%	+8.6 57%	-0.3 59%	-0.2 59%	+0.5 53%	+2.4 61%	+5 57%
Selection Index Values								
Market Target				Index Value		Breed Average		
Self Replacing Index (\$)				+\$ 106		+\$ 113		
Angus Pure Index (\$)				+\$ 142		+\$ 113		
Heifer Dairy Terminal Index (\$)				+\$ 125		+\$ 105		

Comments:

Another solid bull growth in top 10% and EMA top 5%.

Purchaser & Price _____

Lot 32 **PENVOSE 22164 (PV)**

HerdBook No.: 11833022164

Born: 26/09/2022

Sire: **PENVOSE 19570 (PV)**

PENVOSE 1421

Dam: **PENVOSE 17305**

PENVOSE 1558

April 2024 TransTasman Angus Cattle Evaluation								
Calving Ease DIR	Calving Ease DTRS	GL	Birth Wt	200Wt	400Wt	600Wt	Mat Wt	Milk
+1.3 52%	+3.7 44%	-4.3 59%	+3.9 72%	+48 68%	+85 69%	+108 72%	+102 65%	+10 57%
Scrotal Size	Days to Calving (days)	Carcase Wt	Eye M Area	Rib Fat	Rump Fat	RBV	IMF	Docity
+0.6 58%	-2.9 35%	+59 58%	+2.1 54%	+1.7 56%	+2.6 56%	-0.3 51%	+1.6 57%	+19 52%
Selection Index Values								
Market Target				Index Value		Breed Average		
Self Replacing Index (\$)				+\$ 108		+\$ 113		
Angus Pure Index (\$)				+\$ 124		+\$ 113		
Heifer Dairy Terminal Index (\$)				+\$ 107		+\$ 105		

Comments: A medium sized bull which will be suitable for mating heifers with good even spread of data.

Purchaser & Price _____

Breed Avg. EBVs for 2022 Born Calves

Scrotal Size	Days to Calving	Carcase Wt	Eye M Area	Rib Fat	Rump Fat0	RBV	IMF	Docity
+2.0	-4.2	+48	+3.2	+1.1	+1.1	+0.4	+0.9	+22

Lot 33 PENVOSE 22144 (PV)

HerdBook No.: 11833022144 Born: 14/09/2022

Sire: EXAR STOCK FUND 9097B (IMP USA)

IRELANDS FOUR O EIGHT K2

Dam: PENVOSE 122

PENVOSE 1632

April 2024 TransTasman Angus Cattle Evaluation								
Calving Ease DIR	Calving Ease DTRS	GL	Birth Wt	200Wt	400Wt	600Wt	Mat Wt	Milk
-1.7 52%	+3.5 41%	-3.5 64%	+4.9 74%	+63 70%	+112 71%	+152 74%	+151 67%	+21 58%
Scrotal Size	Days to Calving (days)	Carcase Wt	Eye M Area	Rib Fat	Rump Fat	RBV	IMF	Docity
+1.7 63%	-2.3 32%	+85 60%	+3.6 56%	-2.6 58%	-3.0 57%	+0.4 52%	+0.4 59%	+28 52%
Selection Index Values								
Market Target				Index Value		Breed Average		
Self Replacing Index (\$)				+\$ 65		+\$ 113		
Angus Pure Index (\$)				+\$ 99		+\$ 113		
Heifer Dairy Terminal Index (\$)				+\$ 111		+\$ 105		

Comments: He will grow into a big bull. Birth wt of +4.9 through to +151kg which puts him into the top 1% for both 600 day growth and carcase wt.

Purchaser & Price

Lot 34 PENVOSE 22139 (SV)

HerdBook No.: 11833022139 Born: 12/09/2022

Sire: RENNYLEA L519 (IMP AUS) (PV)

SYDGEN ENHANCE

Dam: PENVOSE 20734 (PV)

PENVOSE 130



April 2024 TransTasman Angus Cattle Evaluation								
Calving Ease DIR	Calving Ease DTRS	GL	Birth Wt	200Wt	400Wt	600Wt	Mat Wt	Milk
+0.6 65%	+3.9 59%	-5.0 66%	+4.9 73%	+55 70%	+101 71%	+136 73%	+129 68%	+13 64%
Scrotal Size	Days to Calving (days)	Carcase Wt	Eye M Area	Rib Fat	Rump Fat	RBV	IMF	Docity
+1.7 73%	-4.1 48%	+74 64%	+3.4 62%	+0.7 64%	+1.3 64%	-0.5 60%	+3.6 65%	+30 64%
Selection Index Values								
Market Target				Index Value		Breed Average		
Self Replacing Index (\$)				+\$ 122		+\$ 113		
Angus Pure Index (\$)				+\$ 172		+\$ 113		
Heifer Dairy Terminal Index (\$)				+\$ 117		+\$ 105		

Comments: Sound all round bull with an even spread of figures. Top 5% for 600 day growth, carcase wt and IMF. Top 10% for Angus Pure Index.

Purchaser & Price

April 2024 Angus BREEDPLAN EBVs								
Calving Ease DIR	Calving Ease DTRS	GL	Birth Wt	200Wt	400Wt	600Wt	Mat Wt	Milk
+1.5	+1.0	-3.9	+4.3	+42	+78	+101	+91	+14

Lot 35 **PENVOSE 22211 (PV)**

HerdBook No.: 11833022211

Born: 24/10/2022

Sire: **ATAHUA 360-18 (PV)**

STERN 118 (ET) (SV)

Dam: **PENVOSE 19585 (SV)**

PENVOSE 1749

April 2024 TransTasman Angus Cattle Evaluation								
Calving Ease DIR	Calving Ease DTRS	GL	Birth Wt	200Wt	400Wt	600Wt	Mat Wt	Milk
+1.5 51%	-0.2 42%	-4.8 60%	+5.1 71%	+53 68%	+92 70%	+124 72%	+122 65%	+17 55%
Scrotal Size	Days to Calving (days)	Carcase Wt	Eye M Area	Rib Fat	Rump Fat	RBV	IMF	Docity
+4.0 60%	-4.3 32%	+64 58%	+3.3 54%	-0.3 57%	-0.9 57%	+0.3 52%	+1.1 57%	+19 51%
Selection Index Values								
Market Target				Index Value		Breed Average		
Self Replacing Index (\$)				+\$ 103		+\$ 113		
Angus Pure Index (\$)				+\$ 122		+\$ 113		
Heifer Dairy Terminal Index (\$)				+\$ 115		+\$ 105		

Comments: Good style of Bull, top 10% for 600 Day growth.

Purchaser & Price

Lot 36 **PENVOSE 22217**

HerdBook No.: 11833022217

Born: 22/11/2022

Sire: **PENVOSE 18408 (PV)**

TE MANIA 16351 (SV)

Dam: **PENVOSE 19677 (PV)**

PENVOSE 17272



April 2024 TransTasman Angus Cattle Evaluation								
Calving Ease DIR	Calving Ease DTRS	GL	Birth Wt	200Wt	400Wt	600Wt	Mat Wt	Milk
+2.6 47%	+2.6 38%	-4.3 52%	+4.6 68%	+49 64%	+88 59%	+114 59%	+101 55%	+12 47%
Scrotal Size	Days to Calving (days)	Carcase Wt	Eye M Area	Rib Fat	Rump Fat	RBV	IMF	Docity
+1.7 52%	-4.0 31%	+64 50%	+3.5 46%	+1.0 49%	+1.3 49%	+0.1 45%	+1.4 49%	+19 41%
Selection Index Values								
Market Target				Index Value		Breed Average		
Self Replacing Index (\$)				+\$ 126		+\$ 113		
Angus Pure Index (\$)				+\$ 146		+\$ 113		
Heifer Dairy Terminal Index (\$)				+\$ 116		+\$ 105		

Comments: Very nice bull with an even spread of good EBVs. Top 20% for Angus Pure Index.

Purchaser & Price

Breed Avg. EBVs for 2022 Born Calves

Scrotal Size	Days to Calving	Carcase Wt	Eye M Area	Rib Fat	Rump Fat0	RBV	IMF	Docity
+2.0	-4.2	+48	+3.2	+1.1	+1.1	+0.4	+0.9	+22

Lot 37 **PENVOSE 22151**

HerdBook No.: 11833022151 Born: 20/09/2022

Sire: DEER VALLEY WALL STREET (IMP USA) (ET)

PENVOSE OUTLIER 1800

Dam: PENVOSE 19548 (SV)

PENVOSE 1287

April 2024 TransTasman Angus Cattle Evaluation								
Calving Ease DIR	Calving Ease DTRS	GL	Birth Wt	200Wt	400Wt	600Wt	Mat Wt	Milk
-2.7 56%	+0.8 45%	-3.9 66%	+4.6 74%	+49 71%	+93 72%	+118 74%	+111 68%	+13 61%
Scrotal Size	Days to Calving (days)	Carcase Wt	Eye M Area	Rib Fat	Rump Fat	RBV	IMF	Docity
+1.6 73%	-3.6 37%	+67 62%	+3.8 60%	-0.2 61%	-0.6 61%	+0.2 56%	+1.4 62%	+14 59%
Selection Index Values								
Market Target				Index Value		Breed Average		
Self Replacing Index (\$)				+\$ 107		+\$ 113		
Angus Pure Index (\$)				+\$ 111		+\$ 113		
Heifer Dairy Terminal Index (\$)				+\$ 93		+\$ 105		

Comments: Typical Wall Street Son. Will fit into any herd.

Purchaser & Price _____

Lot 38 **PENVOSE 22190 (PV)**

HerdBook No.: 11833022190 Born: 08/10/2022

Sire: PENVOSE ALCATRAZ 20776 (PV)

ATAHUA 235-06

Dam: PENVOSE 171

PENVOSE 071110

April 2024 TransTasman Angus Cattle Evaluation								
Calving Ease DIR	Calving Ease DTRS	GL	Birth Wt	200Wt	400Wt	600Wt	Mat Wt	Milk
-0.5 45%	-2.1 35%	-4.1 49%	+5.1 71%	+45 66%	+70 67%	+95 63%	+92 58%	+13 49%
Scrotal Size	Days to Calving (days)	Carcase Wt	Eye M Area	Rib Fat	Rump Fat	RBV	IMF	Docity
+1.2 71%	-3.7 29%	+43 53%	+2.5 50%	-0.2 53%	-0.6 53%	+0.5 48%	+1.3 50%	+18 38%
Selection Index Values								
Market Target				Index Value		Breed Average		
Self Replacing Index (\$)				+\$ 88		+\$ 113		
Angus Pure Index (\$)				+\$ 89		+\$ 113		
Heifer Dairy Terminal Index (\$)				+\$ 94		+\$ 105		

Comments: Smaller framed bull. Useful in many herds.

Purchaser & Price _____

April 2024 Angus BREEDPLAN EBVs								
Calving Ease DIR	Calving Ease DTRS	GL	Birth Wt	200Wt	400Wt	600Wt	Mat Wt	Milk
+1.5	+1.0	-3.9	+4.3	+42	+78	+101	+91	+14

Lot 39 **PENVOSE 22130 (SV)**

HerdBook No.: 11833022130

Born: 10/09/2022

Sire: **DEER VALLEY WALL STREET (IMP USA) (ET)**

TE MANIA 16351 (SV)

Dam: **PENVOSE 19554 (SV)**

PENVOSE 1882



April 2024 TransTasman Angus Cattle Evaluation								
Calving Ease DIR	Calving Ease DTRS	GL	Birth Wt	200Wt	400Wt	600Wt	Mat Wt	Milk
-1.9 54%	+2.0 43%	-4.4 63%	+4.2 74%	+51 70%	+99 71%	+128 73%	+118 67%	+15 59%
Scrotal Size	Days to Calving (days)	Carcase Wt	Eye M Area	Rib Fat	Rump Fat	RBV	IMF	Docity
+0.9 72%	-3.7 35%	+72 60%	+2.8 58%	+0.4 60%	+0.4 59%	0.0 54%	+1.4 60%	+19 56%
Selection Index Values								
Market Target				Index Value		Breed Average		
Self Replacing Index (\$)				+\$ 109		+\$ 113		
Angus Pure Index (\$)				+\$ 125		+\$ 113		
Heifer Dairy Terminal Index (\$)				+\$ 101		+\$ 105		

Comments: Wall Street Son with a great set of EBVs, suitable for mating with heifers. A curve bender.

Purchaser & Price _____

Lot 40 **PENVOSE 22150**

HerdBook No.: 11833022150

Born: 17/09/2022

Sire: **RENNYLEA L519 (IMP AUS) (PV)**

HF ALCATRAZ 60F (IMP CAN) (PV)

Dam: **PENVOSE 20727 (PV)**

PENVOSE 109



April 2024 TransTasman Angus Cattle Evaluation								
Calving Ease DIR	Calving Ease DTRS	GL	Birth Wt	200Wt	400Wt	600Wt	Mat Wt	Milk
+2.1 63%	+4.7 56%	-6.2 68%	+4.3 72%	+55 70%	+99 68%	+133 68%	+123 68%	+19 63%
Scrotal Size	Days to Calving (days)	Carcase Wt	Eye M Area	Rib Fat	Rump Fat	RBV	IMF	Docity
+1.8 68%	-5.7 47%	+72 63%	+5.2 62%	+1.6 64%	+2.1 64%	-0.2 59%	+3.0 65%	+25 64%
Selection Index Values								
Market Target				Index Value		Breed Average		
Self Replacing Index (\$)				+\$ 141		+\$ 113		
Angus Pure Index (\$)				+\$ 192		+\$ 113		
Heifer Dairy Terminal Index (\$)				+\$ 124		+\$ 105		

Comments: Very nice Rennylea Bull to finish with. Good even spread of EBVs, a curve bender, suitable for mating heifers. Has the highest Angus Pure Index in the catalogue.

Purchaser & Price _____

Breed Avg. EBVs for 2022 Born Calves

Scrotal Size	Days to Calving	Carcase Wt	Eye M Area	Rib Fat	Rump Fat0	RBV	IMF	Docity
+2.0	-4.2	+48	+3.2	+1.1	+1.1	+0.4	+0.9	+22



- **LIVESTOCK CARTAGE**
- **COMPUTERISED LIME**
- **SUPER AND SEED SOWING**
- **READY MIX CONCRETE**
- **GRAVEL, SAND AND CEMENT SUPPLIES**
- **GENERAL CARTAGE**

Ranfurly Transport 03 444 9738

John (Bulk) 027 351 9464

Richard 021 542 714

NOTES

[illegible]

PURCHASER'S INSTRUCTION SLIP

(To be filled in and handed to the auctioneers before leaving sale)

NAME

ADDRESS

NAIT No.

TELEPHONE

PURCHASES Lot No. Price

 Lot No. Price

 Lot No. Price

 Lot No. Price

 Lot No. Price

 Lot No. Price

 Lot No. Price

 Lot No. Price

TRANSPORT INSTRUCTIONS (CONTACT DETAILS)

ADDRESS:

.....

INSURANCE INSTRUCTIONS

.....

PHONE:

COMPANY TO DEBITED

.....

ADDRESS:

.....

SIGNATURE OF PURCHASER

OR AGENT

DATE

NO VERBAL INSTRUCTIONS CAN BE ACCEPTED

Breeding Better Business

As part of New Zealand's largest Livestock network, our team of Genetics Specialists have the best advice, more contacts and greater reach.

If you're looking for a planned approach to success, give us a call today.

CALLUM MCDONALD
Genetics Representative
027 433 6443

JOHN DUFFY
Auctioneer/Livestock Manager
027 240 3841

RYAN DOWLING
Livestock Representative
027 434 7239

www.pggwrightson.co.nz/livestock

 fb.com/pgwlivestock

 instagram.com/pgwlivestock



ÍCÍB | **BROKERWEB**
Insurance & Risk Advisory

BULL INSURANCE? Yes, we can help.
Scan to find out more.



