

AGRICULTURAL CONTRACTORS MACHINERY REDUCTION ONLINE AUCTION

A/C Langsford N & G Contractors



Thursday 10th April 2025 – 7:00pm

Online BIDR Sale ONLY

Open Days

155 Cox Road, Cambridge

Monday 10th March 2025 - 10:00am – 2:00pm

Monday 7th April 2025 - 10:00am – 2:00pm

Contact PGG Wrightson

Neil Lyons 027 223 5784 Or Ben Gordon 027 270 7729

This sale will be hosted by bidr® (www.bidr.co.nz) as a fully online, SEQUENTIAL auction, with the sale being opened at Lot 1 at the specified sale start time, and all bidding occurring online as the sale moves through the catalogue in sequential order.

The closing of bidding on each lot is controlled by the expiry of the countdown timer. All intending purchasers must register on bidr® in advance of the sale date, by visiting the website and using the "sign up" button, adding their contact information and nominating the agency they would like to purchase through an account held with that agency.

The bidr® team is contactable on 0800 TO BIDR (0800 86 2437), or email enquiries@bidr.co.nz for assistance at any point.

Alternatively, contact your local bidr® representative:

Liam Beattie

General Manager
021 918 554

Bruno Santos

Upper North Island Territory Manager
027 221 8276

Olivia Manley

Lower North Island Territory Manager
027 348 6354

Mckenzie Alfeld

Upper South Island Territory Manager
027 341 8066

Sam Murphy

Lower South Island Territory Manager
027 243 2736

Bianca Perkins

Business Development Coordinator
027 732 0006

Terms of Auction

(PLEASE READ)

- All vehicle and machinery information has been supplied to PGG Wrightson by the vendor
- GST of 15% will be added to purchase price.
- No Buyers premium
- If you are wanting to purchase, You must be registered with BIDR. Full PGG Wrightson trading account is required. Or if you don't have one, you can be set up as a cash buyer to purchase from this auction. Please visit www.bidr.co.nz to register.
- Non PGG Wrightson account holders payment is due immediately once invoices are issued the next day. PGG Wrightson full account holders payment is due within 14 days of auction.
- Once full payment is received, machinery can be collected.
- Please contact our vendor agents to arrange your delivery
Please call **Neil Lyons** 027 223 5784 or **Ben Gordon** 027 270 7729
- All agricultural machinery and equipment will be sold as is where is
- It is the buyers responsibility to fully insure purchases from sale day. All vehicles stored at sale location are at purchasers risk
- Open day location is a working environment.
Please be careful in and around machinery. We operate under the Health and Safety Act 2015.

For more information & photos visit www.agonline.co.nz/upcomingsales
Neil Lyons 027 223 5784
Ben Gordon 027 270 7729

PLEASE NOTE

Due to the nature of our vendor's contracting business and current time of year. Hours and Km's on machinery and equipment will differ to what is in the catalogue as they are still in daily use.

Vehicle Km's and Hours were supplied by our vendor and are current as of 1st February 2025

NOTICE FOR ALL INTENDING CASH BUYERS FOR ONLINE BIDDING

STEP 1 - You must create a bidr profile

- Create an account with bidr by going to www.bidr.co.nz and selecting "Sign Up".
 - a. Fill in all required fields in the 'Personal Information' section.
 - b. In 'Other Information' leave blank Nait Number, Herd Code and Participant Code.
 - c. Read and accept 'terms and conditions'
 - d. Add 'Delivery Address Information'
 - e. For 'Account Details'
 - i. Legal Entity – select Sole Trader from the drop-down menu.
 - ii. Legal Entity Name – enter your full name.
 - iii. Agency – select PGG Wrightson Limited from the drop-down menu.
 - iv. Account number – enter LANGSFORD
 - v. Account name – enter your full name.
- PGG Wrightson will automatically be sent an account request to be actioned on the day of the sale (See further detail below).

STEP 2 - How to add a "Cash Sale" account to your bidr profile

- Go to www.bidr.co.nz and select "Log In".
 - a. Under your name you can select "My Profile"
 - b. Select "Edit"
 - c. Under 'Account Details'
 - i. Agency – select PGG Wrightson Limited from the drop-down menu.
 - ii. Account number – enter LANGSFORD
 - iii. Account name – enter your full name.
- PGG Wrightson will automatically be sent an account request to be actioned on the day of the sale (See further detail below).

Deadlines for the sale

- All Cash Sale accounts **MUST BE SUBMITTED** by 5pm on Tuesday 8th April 2025.
We will not accept any account approvals after this time.
- The trading accounts **will not** be approved until 9am on the day of the sale, you will not be able to register and bid online until these are approved.
- Once these accounts are approved, you will then be able to 'Register' for the auction – you will be notified by email when this has been completed.
- You will be able to "connect" to the auction livestream approximately 10 minutes before the start time.
- The Cash Account will be removed from your bidr profile at the conclusion of the sale.

If you are a successful purchaser

- Payment must be made day after the sale – 10th April 2025
- All items will be held on site until payment has been made.
- Once proof of payment has been made, please contact either Neil Lyons 027 223 5784 or Ben Gordon 027 270 7729 to arrange pick up of goods.

Further assistance needed?

For any more information or help with the sign-up process please get in touch with one of the bidr team on 0800 862 437. If you would like to familiarise yourself with the buying process check out the Support Hub on the bidr website by following this link - <https://bidr.co.nz/support>.

LOT 1

2010 Nissan Navara 450 ST-X Double Cab Ute 4WD

Rego - FKY5 - 433288km



LOT 2

2019 Isuzu CYZ400 6x4 Tip Truck & CWS Trailer Unit

Rego - MJP985 & 44T34 - 235362km (ERoad)

Steel Tipper & 7 Metre Steel Tipping Trailer



LOT 3

2004 Nissan CW400 6x4 Tip Truck

Rego - CMG778 - 805000km

5 Metre Steel Removable Sides



LOT 4

1999 Nissan CW380 6x4 Tip Truck

Rego - KWZ147 - 530000km

5 Metre Steel Tipper



LOT 5

1994 Domett Fruehauf RSK F2F2 28 4 Axle Trailer

T8009 (Deregistered)

Flatdeck



LOT 6

2016 Cambridge Welding 4 Axle Trailer

Rego - 6D347

7 Metre Steel Tipping Trailer



LOT 7

1987 Domett Fruehauf RSK F2F2E8.5 4 Axle Trailer

Rego - 99RAN

8.5 Metre Flatdeck



LOT 8

2019 Cambridge Welding CWS 4 Axle Trailer

Rego - 29J93

7 Metre Steel Tipping Trailer



LOT 9

12T Tip Trailer with sides

2 Axle, 5 Metre



LOT 10

Joskin KTP17/50 Trailer

2 Axle



LOT 11

Joskin KTP17/50 Trailer

2 Axle



LOT 12

Joskin KTP17/50 Trailer

2 Axle



LOT 13

1994 International 515B Wheeled Loader

Rego - HAM989 - 25847Hrs



LOT 14

Samsung SE130LC Excavator

2 Buckets



LOT 15
Digger Auger



LOT 16
Plough (Double)
2.4m, 3 point Linkage (Used for Asparagus)



LOT 17
Plough (Single)
800mm, 3 point Linkage (Used for Asparagus)



LOT 18

Levelling Bar

Small



LOT 19

Levelling Bar with Roller

2.2 Metre



LOT 20

Levelling Bar

2.1 Metre



LOT 21

Levelling Bar

Small



LOT 22

Pearson Grader Blade

2.4 Metre



LOT 23

2009 James Engineering Aerator

5 Disc, 2.4 Metre, Auto Reset



LOT 24

Tractor Rippers

1.4 Metre, 3 point Linkage



LOT 25

2022 McHale Fusion 3 Plus Baler (Spec to Fusion 4)

16800 Bales



LOT 26

2018 McHale Fusion 3 Plus Baler

26604 Bales



LOT 27

2014 McHale Fusion 3 Plus Baler

58898 Bales



LOT 28

2015 McHale Fusion 3 Plus Baler

56615 Bales



LOT 29

2018 John Deere 6230R Tractor

Rego - B7QUP - 6618 Hrs

Front PTO, GPS



LOT 30

2014 John Deere 6170M Tractor with FEL

Rego - A1WKN - 7070Hrs

Front PTO



LOT 31

2006 John Deere 6220 Tractor with FEL

Rego - 23YGA - 10407 Hrs



LOT 32

2008 John Deere 6630 Premium Tractor with FEL

Rego - 53ZQF - 13377 Hrs



LOT 33

2010 John Deere 6230 Tractor with FEL

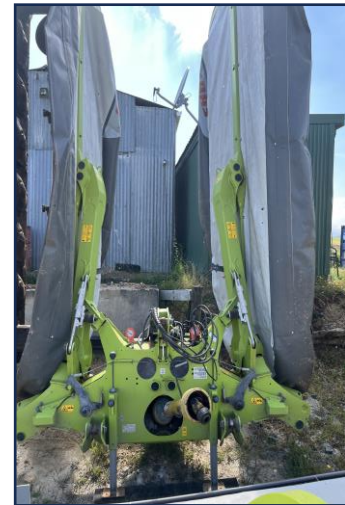
Rego - A5DJJ - 14000 Hrs



LOT 34

2021 Claas 9200 Disco Pal Contour Mowers

Rear Butterfly Mowers



LOT 35

2020 Claas 3200F Disco Profil Mower

Front Mower



LOT 36

2019 Claas Volto 900T Tedder



LOT 37

2012 Claas Liner 2700 Rake



LOT 38

2013 Claas Liner 2700 Rake



LOT 39

Kverneland Plough

5 Farrow



LOT 40

2022 Giltrap 15T Fert Spreader (Pro Series 1240T)

GPS & Scales



LOT 41

2006 Kverneland NGH301 Powerharrow
with Hatzenbichler Air Seeder



LOT 42

2022 Major Cyclone Mower
Shredder



LOT 43

Pearson Back Bale Grabs



LOT 44
Pearson Back Bale Grabs



LOT 45
Hustler Bale Grabs



LOT 46
Hustler Bale Grabs



LOT 47
Robertson Quickhitch



LOT 47A
Robertson Quickhitch



LOT 48
Tractor Front Blade



LOT 49
Tractor Front Weight



LOT 50
Tractor Front Weight



LOT 51
Tractor Front Weight



LOT 52
John Deere Suitcase Weights



LOT 53 / LOT 54 / LOT 55 / LOT 56
Extra Wrap Spool Holder



LOT 57
Dual Wheels (Yellow)
300/95 R52



LOT 58
Dual Wheels (Red)
300/95 R52



LOT 59

Dual Wheels (Red)

300/95 R52



LOT 60

2008 Elite Tandem Trailer with Cage

Rego - M962F



LOT 61

5 Trailer



LOT 62
Small Trailer



LOT 63
Small Trailer



LOT 64
Small Trailer



LOT 65

Truck Silage Bin

5 Metre



LOT 66

Truck Trailer Silage Bin

7 Metre



LOT 67

Truck Trailer Silage Bin

7 Metre



LOT 68

Truck Trailer Stock Alloy Crate

28 Foot Crate



LOT 69

Feed out Wagon



LOT 70

Mole Plough



LOT 71

Bitumen Hot Mix Truck Spreaders



LOT 72

2019 Fendt 720 Tractor

Rego - B2YLP- 7063 Hrs

Front PTO, GPS



LOT 73

2018 John Deere 6195M Tractor with FEL

Rego - B2PGG - 7316 Hrs



LOT 74

2018 John Deere 6195M Tractor with FEL

Rego - B6RPR - 8719 Hrs

Front PTO, GPS



LOT 75

2010 John Deere 6630 Tractor with FEL

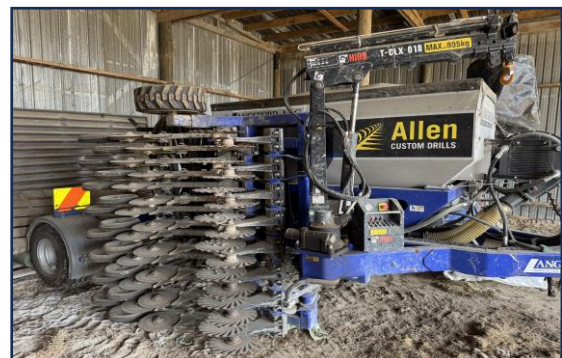
Rego - A4EAZ - 14193 Hrs



LOT 76

2020 Allen Custom ED4000 Seed Drill

With Crane, (Seed, Fert & Slug Bait Bins)



LOT 77

2017 Claas 9200 Disco Trend Pal Mowers

Rear Butterfly Mower



LOT 78

2018 Claas 3200F Disco Profil Mower

Front Mower



LOT 79

2019 Claas Volto 900T Tedder



LOT 80

Celli Rotary Hoe with Crumble Roller



LOT 81

2013 Alpenco DK500A Powerharrow





**Purchaser to arrange transport of bales at buyers cost
Vendor will load on to your transport**

**Grass Round Silage Bales – Excellent Quality
Hundreds available**

If you do require more bales, contact us after the auction

LOT 82

1 x Unit Load (Approx 44) Round Grass Silage Bales
Rota Cut, Film on Film

LOT 83

1 x Unit Load (Approx 44) Round Grass Silage Bales
Rota Cut, Film on Film

LOT 84

1 x Unit Load (Approx 44) Round Grass Silage Bales
Rota Cut, Film on Film

LOT 85

1 x Unit Load (Approx 44) Round Grass Silage Bales
Rota Cut, Film on Film

LOT 86

1 x Unit Load (Approx 44) Round Grass Silage Bales
Rota Cut, Film on Film

LOT 87

1 x Unit Load (Approx 44) Round Grass Silage Bales
Rota Cut, Film on Film

LOT 88

1 x Unit Load (Approx 44) Round Grass Silage Bales
Rota Cut, Film on Film

LOT 89

1 x Unit Load (Approx 44) Round Grass Silage Bales
Rota Cut, Film on Film

LOT 90

1 x Unit Load (Approx 44) Round Grass Silage Bales
Rota Cut, Film on Film

LOT 91

1 x Unit Load (Approx 44) Round Grass Silage Bales
Rota Cut, Film on Film

LOT 92

1 x Unit Load (Approx 44) Round Grass Silage Bales
Rota Cut, Film on Film

LOT 93

1 x Unit Load (Approx 44) Round Grass Silage Bales
Rota Cut, Film on Film

LOT 94

1 x Unit Load (Approx 44) Round Grass Silage Bales
Rota Cut, Film on Film

LOT 95

1 x Unit Load (Approx 44) Round Grass Silage Bales
Rota Cut, Film on Film

LOT 96

1 x Unit Load (Approx 44) Round Grass Silage Bales
Rota Cut, Film on Film

LOT 97

1 x Unit Load (Approx 44) Round Grass Silage Bales
Rota Cut, Film on Film

**Thank you for attending another
PGG Wrightson Livestock
Machinery Auction**

**We wish you all the best with your
new purchasers**



**Thinking of having a clearing sale??
We cover all types of On Farm or Saleyard
Clearing Sales and Machinery Auctions**

If you want local industry knowledge, commitment, integrity, professionalism, and top results talk to the clearing sale specialists

Contact your local PGG Wrightson agent NOW



Come and check out the machinery at
one of the Open Days

155 Cox Road, Cambridge

Monday 10th March 2025 - 10:00am – 2:00pm

Monday 7th April 2025 - 10:00am – 2:00pm

